



**KLINE**  
SIMMENTAL RANCH  
*Hurdsfield, North Dakota*

*8<sup>th</sup> Annual Production Sale*

**FEB. 2, 2020 • 2 P.M.**

AT THE RANCH • 5 MILES WEST AND 1 MILE NORTH OF HURDSFIELD, ND

*Selling:* 50 Simmental and SimAngus™ Bulls

20 Registered Open Heifers • 50-75 Commercial Bred Heifers



# WELCOME!



*Welcome!* As I am writing this it is almost 2020. Looking back on 2019 is a reminder that it will be a year that no one in North Dakota production agriculture will forget. It was a challenge to say the least and 2020 is going to be welcomed in by many with hopes of better weather, markets, and spirit. When times are hard at some point we have to look at the blessings in our lives and be grateful, and for many I'm sure that was tough to do this past year. So to start with I am thankful for my family. The kids are doing great. Eddy is rocking first grade and is so smart for his age. He is such a great helper on the ranch and loves spending time helping dad. He has become quite a walleye fisherman and is starting to enjoy hunting as well. He is also a great big brother and is becoming quite the protector of his little sister. Emersyn celebrated his 5th birthday in November and was spoiled with more farm and ranch toys. He is developing quite a passion for farm and ranch life, and is quite good at mimicking everything we do with his toys inside. Landri also celebrated her 3rd birthday in November. She is quite a little diva and knows how to work it with dad. She already has developed a love for her shoes and pretty dresses, makeup and nail polish, and I am learning all about that stuff real quick too. Mom and Dad stay busy on the ranch and keeping up with Eddy, Emersyn, Landri, Tatum, Tenley, Karamie, and baby boy Kline due in February. Their accumulation of grandkids is growing fast and they love every minute they spend with them. They are great grandparents and we are very lucky to have them.

The cattle have done well all year despite the conditions they endured. It is a testament to our great Simmental breed and the hardiness they possess for our North Dakota climate. 2019 through everything at them from a bitter cold winter, spring mud, flies, Summer mud and extremely wet pastures into the fall, a severe October blizzard and its after effects. However, we were blessed with more grass in the pastures late in the fall than I can ever remember. Fortunately, the cattle were able to graze late and allowed us to catch up on fall work. Most every one had some of the nicest silage crops and it was a huge relief to see it in a pile.

Our offering this year is one we are quite proud of. The bulls were weaned a month later than normal but went right to eating and are starting to look the part. Once again we will offer a stout group of Riddler calves, which have been highlights of our last two sales. The QB Blueprint sire group is very stout and heavy muscled and he also accounted for our heaviest calf we have ever weaned off the cow at 945lbs. DCR Main Attraction sons were admired by many at our customer appreciation supper and pasture tour in September. They are attractive stout and very maternal and sport a blaze face. WLB Manitoba, and KLSR Speed Demon are two other black sires that have some awefully good calves in the sale also. The red calves will lead off with really unique MRL Red Whiskey son with blaze face. DCR Power Up, KLSR Red Nation, IPU Royal flush and Kuntz Sheriff make up our red offering with some very powerful stout bulls. We are also offering a group of registered open heifers that will all make great breeding pieces to any herd.

I would like to thank all of friends and family for their help throughout the year and on sale day. I would also like to thank all of our great customers and friends in the cattle industry. Our success is directly related to your continued support of our program and it is greatly appreciated. We look forward to seeing all of you on sale day. Thank You!

- The Kline Family

*Visitors welcome anytime!*

**Monty & Terri • Matt, Eddy, Emersyn & Landri Kline**

**Matt: (701) 693-6317 • Monty: (701) 693-6806**

**E-mail: [klsrcows@gmail.com](mailto:klsrcows@gmail.com)**

Visit us online for videos, DNA and other updates prior to sale day.

**[www.KLSRCOWS.com](http://www.KLSRCOWS.com)**  
**[f/Kline Simmental Ranch](https://www.facebook.com/KlineSimmentalRanch)**



8<sup>th</sup> Annual Production Sale  
**FEB. 2, 2020**

AT THE RANCH • HURDSFIELD, ND

*Selling:* 50 Simmental and SimAngus™ Bulls  
 15 Registered Bred Heifers  
 20 Registered Open Heifers  
 & approx 100 commercial bred heifers

**KLSR PHONE NUMBERS**

Matt Kline.....(701) 693-6317  
 Monty Kline.....(701) 693-6806

**AUCTIONEER:** Mike Ostrem, Rugby ND .....(701) 208-0164

**RINGMEN**

Perry Thomas, American Simmental Assoc.....(701) 370-8336  
 Zac Hall, Forte Livestock.....(701) 595-6887

**SALE TERMS AND CONDITIONS**

Cattle will sell under the terms of the American Simmental Association. Please ask and terms will be provided. KLSR or anyone involved assume no legal risk or liability on sale day.

**BULL HEALTH**

**Birth 2018** • Received Inforce 3, Alpha C&D and Vitamin A, D & E  
**May & September 2018** • Received Inforce 3, Vista once sq, and 7way/ Somnus & injected with Dectomax  
**January 2019** • Received Virashield 6 and poured with Clean up II.

They have been developed on a TMR consisting of alfalfa, barley hay, and grass hay, rolled corn, modified distillers, and liquid mineral from Hubbard feeds.

**OPEN HEIFER HEALTH**

Same as bull calves at birth and September  
**January** • Bangs vaccinates, first round of express FP 5 VL5 & poured with clean up II

**COMMERCIAL BRED HEIFERS HEALTH**

3 rounds modified live vaccines as calves  
 Bangs vaccinated  
 Express 5 FP VL5 prior to breeding  
 Injected with Dectomax and poured with Clean up II

**LIVESTOCK INSURANCE**

Insurance will be available on sale day. We will do our best between the sale and delivery of the bulls to keep them healthy and safe. However we strongly suggest insuring your purchases in case of accidental injury or death.

**CARE AFTER THE SALE AND DELIVERY**

All bulls will remain at KLSR after the sale to ensure their growth and development. We will start delivering in April after a breeding soundness exam and fertility test has been completed. We will deliver for free to ND, MN, MT, and SD. We will work with individuals of further distance to get your animals where they need to go. Heifers will need to be taken home or delivered ASAP after the sale. Please visit with us to make arrangements.

**SIGHT UNSEEN BIDDING:** This year we will have DVAuction at the sale. We will also have sale staff available to bid over the phone like in years past. Please contact us or stop in to view the cattle prior to the sale.

Jeff Thomas will have viewed the cattle prior to the sale for anyone who needs a second opinion.  
 406-581-8859

**HOTEL ACCOMMODATIONS**

Cobblestone Inn & Sweets.....(701) 635-2222  
 410 W Brester, Harvey ND

McClusky Motor Motel.....(701) 636-2507  
 394 ND 200, McClusky ND

**This sale will be broadcast live on the internet.**

**DVAuction**  
 Broadcasting Real-Time Auctions

**Real time bidding & proxy bidding available.**

Ads and catalog designed by **Strommen Livestock Services**,  
 Fort Rice, ND • (701) 290-3886



**G902**

**G902 KLSR BATALION G902**

BD	Color	%Sim	Act. BW/Ratio	205/Ratio	P/S
2/16/19	B	5/8SM 3/8AN	73/115	823/103	P

KUNTZ MARSHALL 12Y  
 KUNTZ SHERIFF 8A  
 PEACOCK'S LI'L NETTIE 23Y  
 KLSR BATALION G902 <sup>3647870</sup>  
 S A V TEN SPEED 3022  
 KLSR MISS TEN SPEED E703  
 KLSR MISS GRIZ C525

EPDs	
CE	15.3
BW	-2.1
WW	73.1
YW	114.5
ADG	0.26
MCE	7.6
Milk	27.1
MWW	63.6
Stay	15.5
Marb	0.14
REA	0.75
API	133.4
TI	76.3

- Heifer bull Potential
- Unique pedigree with mating flexibility on red or black cattle
- Stout, sound, and moderate, clean fronted and small headed
- Dam did a great job on her first go around, perfect uddered, moderate easy doing female

**G906 KLSR EXISS G906**

BD	Color	%Sim	Act. BW/Ratio	205/Ratio	P/S
2/18/19	B1/2SM	3/8AN 1/8CS	74/113	810/101	P

TNT BCR UNIFIED B203  
 TNT UNION D385  
 TNT MISS B91  
 KLSR EXISS G906 <sup>3647908</sup>  
 S A V TEN SPEED 3022  
 KLSR MISS TEN SPEED E704  
 KLSR MISS GRIZZ C586

EPDs	
CE	11.8
BW	-0.4
WW	82.2
YW	129.5
ADG	0.3
MCE	6.3
Milk	21.1
MWW	62.1
Stay	12.5
Marb	0.34
REA	0.71
API	134
TI	83.3

- Heifer bull potential
- Calving ease, power, and maternal combination
- Long spined, thick and heavy muscled, clean fronted, sound and attractive
- He was a standout along side his hard working Ten Speed dam all summer and fall. Another first calf heifer who looks to have a bright future.



**G906**



KLSR EXISS G906 and dam



KLSR MR RIDDLER G912 and dam

<b>G909 KLSR RIDDLER G909</b>						EPDs	
BD	Color	%Sim	Act. BW/Ratio	205/Ratio	P/S	CE	3.6
2/19/19	B	PB	95/92	769/96	P	BW	4.7
						WW	90.5
						YW	136
						ADG	0.28
						MCE	3.3
						Milk	14.3
						MWW	59.5
						Stay	19.3
						Marb	-0.04
						REA	1.05
						API	120.4
						TI	75.7

- Powerful made bull common of the Riddler Progeny
- Performance pedigree will add pounds at weaning time, performance in the feedlot and maternal strength to his daughters.
- Dam is a moderate an easy keeping Manitoba daughter who is sound and well uddered
- Manitoba himself is going to be 6 this spring and is still as sound as can be.



G912

<b>G912 KLSR MR RIDDLER G912</b>						EPDs	
BD	Color	%Sim	Act. BW/Ratio	205/Ratio	P/S	CE	4.9
2/20/19	B	3/4 SM 1/4 AN	95/	900/	P	BW	4.8
						WW	93.6
						YW	140
						ADG	0.29
						MCE	5.2
						Milk	20.7
						MWW	67.5
						Stay	15.7
						Marb	-0.02
						REA	1.07
						API	117.2
						TI	79

- Performance and Maternal Pedigree and a standout all year long
- Big Bodied, Powerful, and thick Riddler son
- His dam is a beautiful broody black blaze Locomotive daughter
- Locomotives best assets are the daughters he left us with
- He will ad performance across the board and maternal strength to his daughters



G919

<b>G919 KLSR WHISKEY GENRAL G919</b>						EPDs	
BD	Color	%Sim	Act. BW/Ratio	205/Ratio	P/S	CE	13.9
2/24/19	R	PB	73/112	812/102	P	BW	-1.6
						WW	73.6
						YW	110.4
						ADG	0.23
						MCE	8.6
						Milk	27.3
						MWW	64
						Stay	17.7
						Marb	-0.14
						REA	0.85
						API	129.7
						TI	73.7

- Heifer bull potential
- Sound made, attractive, clean fronted
- Dam is a typical Red Whiskey Daughter, Moderate, pear shaped, easy doing females and all have great udders. I wish we had more bulls to offer out of them, but they gave us some great heifer calves instead that will be added to the herd. Very excited for the bright future of the Whiskey daughters, they are all mated to our new red herdsire WLB Blood Runner 435B to come with their 2nd calves. Should be exciting.

<b>G922 KLSR RIDDLER G922</b>						EPDs	
BD	Color	%Sim	Act. BW/Ratio	205/Ratio	P/S	CE	7.6
2/24/19	B	3/4SM 1/4AN	85/108	752/94	P	BW	2.3
						WW	84.4
						YW	134.3
						ADG	0.31
						MCE	7
						Milk	22.9
						MWW	65.1
						Stay	19.2
						Marb	0.22
						REA	0.77
						API	132.3
						TI	78.3

- Performance pedigree
- Full brother to our high seller last year
- Combines two big time herdbulls in Riddler and Harvestor.
- Dam has outstanding mothering ability

<b>G926 KLSR POWER UP G926</b>						EPDs	
BD	Color	%Sim	Act. BW/Ratio	205/Ratio	P/S	CE	7.3
2/25/19	R	PB	90/101	758/95	P	BW	2.1
						WW	73.8
						YW	106.8
						ADG	0.21
						MCE	3.5
						Milk	21.9
						MWW	58.7
						Stay	19.5
						Marb	-0.03
						REA	0.95
						API	124
						TI	70.6

- Powerful performance and maternal pedigree
- Sired by DCR Power Up who did a great job siring consistent thickness and muscle in his sons and daughters,
- Long bodied, heavy muscled, thick and sound built calf

## G927 KLSR MR RIDDLER G927

BD	Color	%Sim	Act. BW/Ratio	205/Ratio	P/S
2/25/19	B	PB	95/89	748/	P

LFE GOTHAM 819Y  
 LFE THE RIDDLER 323B  
 LFE BS CHARO 23Y  
**KLSR MR RIDDLER G927** <sup>3647918</sup>  
 ELLINGSON 680S W948  
 KSR DELIGHT 222Y  
 KSR CUT ABOVE 722S

- Powerful performance, and maternal pedigree
- Another powerful Riddler calf, His dam is a very easy keeping cow that has a herd bull working for Wayne Baustad and has a couple real good daughters in our herd. One of them is the dam to the G909 bull in the sale.

EPDs	
CE	3
BW	4.9
WW	93.2
YW	143.6
ADG	0.31
MCE	2.4
Milk	18.6
MWW	65.2
Stay	20
Marb	-0.03
REA	1.07
API	123.1
TI	77.9

## G931 KLSR SUPERDUTY G931

BD	Color	%Sim	Act. BW/Ratio	205/Ratio	P/S
2/26/19	B	PB	101/89	913/114	P

LRS GRADE BREAK 114B  
 QB BLUEPRINT D47  
 RUST MISS 452B  
**KLSR SUPERDUTY G931** <sup>3647929</sup>  
 MR NLC SUPERIOR S6018  
 KLSR BENELLI X42  
 KBHR T230

- Big time power, performance, and maternal
- Was the standout of the bull calves all year and admired by all who attended our appreciation supper this fall.
- From front to back he might be the stoutest bull we have raised. His dam cranks out scale busters no matter how she is mated.
- Unfortunately he is Hetero Polled, But don't let that scare you away. If you sell off the cow or want to put weight on your calves in a feedlot, his calves will excel in all areas. He was the heavy weight at weaning time 945lbs

EPDs	
CE	5.1
BW	5.3
WW	91
YW	140.3
ADG	0.31
MCE	3
Milk	20
MWW	65.4
Stay	17.6
Marb	-0.01
REA	1.11
API	120.7
TI	77.3



**G931**

## G932 KLSR WHISKEY G932

BD	Color	%Sim	Act. BW/Ratio	205/Ratio	P/S
2/26/19	R	PB	84/104	690/86	P

TNT BOOTLEGGER Z268  
 MRL RED WHISKEY 101B  
 MRL MISS 677Y  
**KLSR WHISKEY G932** <sup>3647944</sup>  
 KLSR RED TRAIN B82  
 KLSR MS TRAIN D633  
 KLSR MS ATOMIC Z21

- Performance, calving ease, and maternal pedigree
- Soggy made and moderate whiskey son. He could potentially be used on heifers and for sure 2nd calvers, the whiskey calves are consistently smaller at birth than his EPDs imply.
- His dam was is from a calving ease cow family, great milker and good udder. Unfortunately she was our only death loss in the early October blizzard.

EPDs	
CE	8
BW	3.1
WW	73.3
YW	105.2
ADG	0.2
MCE	6.1
Milk	19.8
MWW	56.4
Stay	17.9
Marb	0
REA	0.77
API	120.7
TI	69.4

## G935 KLSR MR RIDDLER G935

BD	Color	%Sim	Act. BW/Ratio	205/Ratio	P/S
2/26/19	B	PB	77/116	688/86	P

LFE GOTHAM 819Y  
 LFE THE RIDDLER 323B  
 LFE BS CHARO 23Y  
**KLSR MR RIDDLER G935** <sup>3647878</sup>  
 TNT HUMMER T292  
 KLSR MS HUMMER 123  
 123W

- Twin Riddler sons
- One black and one black baldy
- Performance and maternal pedigree
- Full brother sold to Adam Zink in last years sale
- Dam is gutsy moderate cow, who milks well

EPDs	
CE	8.7
BW	0.8
WW	66.8
YW	102.5
ADG	0.22
MCE	6.8
Milk	25.3
MWW	58.7
Stay	16.7
Marb	0.01
REA	0.82
API	122.7
TI	69.6

## G936 KLSR MR RIDDLER G935

BD	Color	%Sim	Act. BW/Ratio	205/Ratio	P/S
2/26/19	B	PB	77/116	688/86	P

LFE GOTHAM 819Y  
LFE THE RIDDLER 323B  
LFE BS CHARO 23Y  
KLSR MR RIDDLER G935 3647878  
TNT HUMMER T292  
KLSR MS HUMMER 123  
123W

- Twin Riddler sons
- One black and one black baldy
- Performance and maternal pedigree
- Full brother sold to Adam Zink in last years sale
- Dam is gutsy moderate cow, who milks well

EPDs	
CE	8.7
BW	0.8
WW	66.8
YW	102.5
ADG	0.22
MCE	6.8
Milk	25.3
MWW	58.7
Stay	16.7
Marb	0.01
REA	0.82
API	122.7
TI	69.6

## G941 KLSR MR WHISKEY G941

BD	Color	%Sim	Act. BW/Ratio	205/Ratio	P/S
2/28/19	R	PB	97/93	776/97	P

TNT BOOTLEGGER Z268  
MRL RED WHISKEY 101B  
MRL MISS 677Y  
KLSR MR WHISKEY G941 3647922  
KLSR MORNING DOVE Y10  
KLSR MISS DOVE B64  
DSR REAL PROMO R850

- Performance and maternal pedigree
- Full brother sold to Jeff Dewitz in last years sale
- Dam is a treasured Red Dove daughter, we don't have many but they are good solid cows.

EPDs	
CE	5.8
BW	5.1
WW	84.7
YW	125.1
ADG	0.25
MCE	5.3
Milk	19.8
MWW	62.1
Stay	16.3
Marb	-0.01
REA	0.93
API	115.8
TI	73.5

## G944 KLSR BLUEPRINT G944

BD	Color	%Sim	Act. BW/Ratio	205/Ratio	P/S
2/28/19	B	PB	94/96	802/100	P

LRS GRADE BREAK 114B  
QB BLUEPRINT D47  
RUST MISS 452B  
KLSR BLUEPRINT G944 3647939  
NLC FREE AGENT 40A  
C578  
KS MISS BLK DIAMOND A862

- Performance, maternal, and eye appealing pedigree
- Stylish, thick made calf out of an easy keeping female who has raised three powerful herdbulls for us. KLSR Speed Demon being one of them. The registered black bred heifers in the sale will be carrying his service

EPDs	
CE	9.7
BW	3.5
WW	79.4
YW	127.6
ADG	0.3
MCE	5.6
Milk	23.4
MWW	63
Stay	18.1
Marb	0.08
REA	1.01
API	131.6
TI	75.9

## G946 KLSR RIDDLER G946

BD	Color	%Sim	Act. BW/Ratio	205/Ratio	P/S
2/24/19	B1/2SM 3/8AN	1/4CS	92/101	744/93	P

LFE GOTHAM 819Y  
LFE THE RIDDLER 323B  
LFE BS CHARO 23Y  
KLSR RIDDLER G946 3647949  
H A IMAGE MAKER 0415  
KLSR MISS IMAGE Z10  
KLSR MISS 878 X16

- Performance, maternal, calving easy pedigree
- Powerful Riddler son that offers a little more calving ease.
- His Image Maker dam has a great udder.
- Riddler calves always come across the scale at the top end

EPDs	
CE	9.1
BW	1.7
WW	78.7
YW	121.8
ADG	0.27
MCE	7
Milk	23
MWW	62.3
Stay	18.5
Marb	0.21
REA	0.63
API	129.4
TI	74.9



## G949 KLSR MAIN ATTRACTION G949

BD	Color	%Sim	Act. BW/Ratio	205/Ratio	P/S
3/1/19	B	PB	94/96	796/100	P

ES RIDGERIDER YW3  
DCR MR MAIN ATTRACTION E18  
DCR MS TOP GRADE C238  
KLSR MAIN ATTRACTION G949 3647941  
TNT TANKER U263  
KLSR MISS TANKER B21  
KLSR MISS T292 Y15

- Performance and maternal pedigree, Herd sire prospect
- Stout, soggy, thick made calf.
- The Main Attraction x Tanker combo makes for an intriguing herd bull prospect
- Backed by two great cow families, His tanker dam is a just that, a tank, And Main Attractions mom is the main reason we bought him. This is a calf we think highly of and are excited about his future

EPDs	
CE	4.5
BW	3.6
WW	75.8
YW	114.6
ADG	0.24
MCE	3.5
Milk	26.7
MWW	64.6
Stay	19.8
Marb	-0.03
REA	1.03
API	119.9
TI	70.2

## G950 KLSR SKIN HEAD G950

BD	Color	%Sim	Act. BW/Ratio	205/Ratio	P/S
3/1/19	B	3/4SM 1/4 AN	73/113	769/96	P

S A V TEN SPEED 3022  
KLSR SPEED DEMON E708  
C578  
KLSR SKIN HEAD G950 3647909  
KS POWER PLAY B661  
KLSR MISS PLAYER E822  
KS MISS BLK DIAMOND A862

EPDs	
CE	12.5
BW	0.4
WW	68.8
YW	110.3
ADG	0.26
MCE	5.6
Milk	24.7
MWW	59
Stay	16
Marb	0.19
REA	0.75
API	127.1
TI	71.2

## G953 KLSR MAIN ATTRACTION G953

BD	Color	%Sim	Act. BW/Ratio	205/Ratio	P/S
3/2/19	B	3/4SM 1/4AN	93/102	669/93	P

ES RIDGERIDER YW3  
DCR MR MAIN ATTRACTION E18  
DCR MS TOP GRADE C238  
G953 3664728  
KLSR PERFECT IMAGE Y1  
C568  
KLSR QUEEN RED A45

- Performance, maternal and calving ease pedigree
- Black blaze face Son of Main Attraction. His dam is a broody easy keeping cow. His mother was injured this summer attributing to his lower weaning weight.

EPDs	
CE	7.5
BW	1.9
WW	67.5
YW	102.7
ADG	0.22
MCE	4.3
Milk	28.2
MWW	63.4
Stay	18.2
Marb	0.08
REA	0.84
API	125.4
TI	70.1



**G959**

**G957 KLSR MAIN ATTRACTION G957**

BD	Color	%Sim	Act. BW/Ratio	205/Ratio	P/S
3/3/19	B	PB	98/88	790/99	P
<p>ES RIDGERIDER YW3 DCR MR MAIN ATTRACTION E18 DCR MS TOP GRADE C238 KLSR MAIN ATTRACTION G957 <sup>3647930</sup> KOP GRIZZLY 161A KLSR MS GRIZZ D644 KLSR U819</p>					

EPDs	
CE	3.3
BW	4.9
WW	76.2
YW	110.3
ADG	0.21
MCE	2.8
Milk	25
MWW	63
Stay	18.8
Marb	-0.03
REA	0.96
API	113.5
TI	68.3

- Performance and Maternal Pedigree
- Thick attractive made calf
- A lot of maternal potential here as we think Main Attraction's daughters will be great assets to our herd in years to come.

**G959 KLSR MR RIDDLER G959**

BD	Color	%Sim	Act. BW/Ratio	205/Ratio	P/S
B	PB	100/91	866/108		P
<p>LFE GOTHAM 819Y LFE THE RIDDLER 323B LFE BS CHARO 23Y KLSR MR RIDDLER G959 <sup>3647943</sup> LFE BS LEWIS 322U BCLR MISS STUBBY A379 HAAS RANCH R29</p>					

EPDs	
CE	4.3
BW	4.5
WW	95.4
YW	142.5
ADG	0.29
MCE	2.5
Milk	14.7
MWW	62.4
Stay	18.6
Marb	-0.06
REA	1.04
API	121
TI	78.6

- Powerful performance and maternal pedigree
- Another reflection of what Riddler adds to his progeny
- Very thick and heavy muscled, A standout all yearlong
- His dam was Purchased from Doug Bichler as a high selling bred heifer in 2015, and she has put 4 powerful bulls through our bull sale since we have owned her
- He will make friends on sale day

**G964 KLSR BLK WHISKEY G 964**

BD	Color	%Sim	Act. BW/Ratio	205/Ratio	P/S
3/4/19	B	3/4SM 1/4AN	89/97	839/100	P
<p>TNT BOOTLEGGER Z268 MRL RED WHISKEY 101B MRL MISS 677Y KLSR BLK WHISKEY G 964 <sup>3664033</sup> RENDEZVOUS LOCOMOTIVE 80B KLSR MS LOCO D914 914</p>					

EPDs	
CE	5.5
BW	4.8
WW	80.7
YW	114.4
ADG	0.21
MCE	5.4
Milk	20.4
MWW	60.6
Stay	12.1
Marb	-0.04
REA	0.93
API	103.2
TI	70.3

- Powerful performance, maternal and calving ease pedigree
- This guy has been a cool calf to watch grow up, He is a black blaze face son of Red Whiskey mothered by a black blaze faced daughter of Locomotive. He will ad style and performance along with great daughters and improve udder quality. He should keep the blaze face on a majority of his calves, it runs deep in his pedigree.







KLSR MAIN ATTRACTION G965 and dam

### G965 KLSR MAIN ATTRACTION G965

BD	Color	%Sim	Act. BW/Ratio	205/Ratio	P/S
3/4/19	B	PB	102/88	864/108	P

ES RIDGERIDER YW3  
 DCR MR MAIN ATTRACTION E18  
 DCR MS TOP GRADE C238  
 KLSR MAIN ATTRACTION G965 <sup>3647934</sup>  
 KS BLACK DIAMOND W992  
 KLSR SHINE Y6  
 OLF MISS NOPHALT U115

EPDs	
CE	3.4
BW	4.4
WW	73.7
YW	118.1
ADG	0.28
MCE	1.5
Milk	30
MWW	66.9
Stay	21.3
Marb	-0.05
REA	1.08
API	119.4
TI	68

- Powerful performance and maternal pedigree
- Here your blaze face power bull with a larger frame, was one of the heavy weights at weaning time and has that extra length that adds pounds
- His dam is one you can always count on, her two daughters are working in our herd and all of her bull calves have sold well in our sale.
- Once again two great cow family's with Y6 and C238 in the pedigree

### G967 KLSR BLACK NATION G967

BD	Color	%Sim	Act. BW/Ratio	205/Ratio	P/S
3/4/19	B	PB	94/97	825/103	P

THR NORTHERN 2109  
 KLSR RED NATION C545  
 DSR PASSION U1  
 KLSR BLACK NATION G967 <sup>3647931</sup>  
 SAND RANCH HAND  
 KLSR U807  
 117

EPDs	
CE	8.6
BW	2.3
WW	68
YW	88.4
ADG	0.13
MCE	4.5
Milk	20.5
MWW	54.5
Stay	14.5
Marb	-0.07
REA	0.67
API	108.7
TI	65

- Performance and maternal pedigree
- Long bodied powerful black son of red nation. Mothered by our 807U cow who has done well for us in her long career. She has 2 herd bulls working for Jimmy Nuemiller, Sykeston ND. She looks great for a U model, holds her condition very well. She actual could stand to loose a little condition. Heterozygous black.

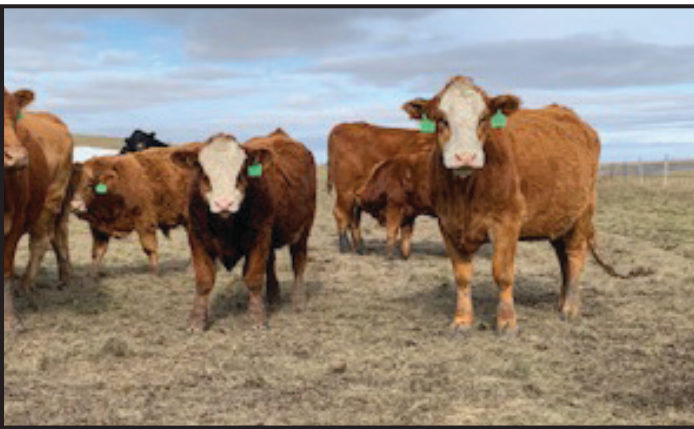
### G968 G968

BD	Color	%Sim	Act. BW/Ratio	205/Ratio	P/S
3/4/19	B	1/2SM 1/2 AN	86/100	777/97	P

S A V TEN SPEED 3022  
 KLSR SPEED DEMON E708  
 C578  
 G968 <sup>3647901</sup>  
 S A V INTERNATIONAL 2020  
 KLSR MISS IH E771  
 X105

EPDs	
CE	9.8
BW	2.4
WW	71.9
YW	114.6
ADG	0.27
MCE	2.9
Milk	23
MWW	58.9
Stay	14.5
Marb	0.38
REA	0.65
API	127.8
TI	74

- Powerful performance, calving ease and maternal pedigree
- Stout made, moderate, heavy muscled, attractive calf
- Dam is a SAV International first calf heifer who is built just like G968, very easy doing, and great udder



KLSR HONDO G969 and dam



### G969 KLSR HONDO G969

BD	Color	%Sim	Act. BW/Ratio	205/Ratio	P/S
3/5/19	R	PB	92/95	857/107	P

TNT BOOTLEGGER Z268  
 MRL RED WHISKEY 101B  
 MRL MISS 677Y  
 KLSR HONDO G969 <sup>3647928</sup>  
 RENDEZVOUS LOCOMOTIVE 80B  
 D603  
 DSR MIDNIGHT TRACK T500

EPDs	
CE	4.4
BW	5.4
WW	88.1
YW	127.4
ADG	0.25
MCE	4.6
Milk	22.8
MWW	66.9
Stay	16.5
Marb	-0.01
REA	0.97
API	114.5
TI	75.1

- Powerful Performance and maternal pedigree
- Red Baldy and a Pen Favorite
- Very soft made, thick, soggy, dark red and hairy in a moderate package
- Our T500 cow is his maternal grandam, Every calf from her was a good one, including a couple high selling bulls and many others at the top end. Pair that with a touch of fullblood and it makes him a very interesting calf for the red baldy enthusiasts

### G970 KLSR BLUEPRINT G970

BD	Color	%Sim	Act. BW/Ratio	205/Ratio	P/S
3/5/19	B	PB	98/94	830/104	P

LRS GRADE BREAK 114B  
 QB BLUEPRINT D47  
 RUST MISS 452B  
 KLSR BLUEPRINT G970 <sup>3647923</sup>  
 MR NLC SUPERIOR S6018  
 KLSR SUPER POWER Y22  
 KSR TERESA 822T

EPDs	
CE	5.2
BW	4.4
WW	82.2
YW	124.6
ADG	0.26
MCE	4
Milk	21.5
MWW	62.6
Stay	18.5
Marb	-0.03
REA	1.08
API	119.3
TI	72.7

- Powerful Performance and maternal pedigree
- Herd sire Prospect
- Very correct and sound made, attractive, thick, heavy muscled
- His dam has 7 bull calves to her credit, all but one has sold in our sale.
- He will be easy to find sale day

## G976 KLSR RED NATION G976

BD	Color	%Sim	Act. BW/Ratio	205/Ratio	P/S
3/6/19	B	PB	89/103	741/93	P
<p>THR NORTHERN 2109 KLSR RED NATION C545 DSR PASSION U1</p> <p>KLSR RED NATION G976 3647910 KS RED DOVE R130 KLSR MS DOVE Y14 DSR BUTTERFLY GIRL S821</p>					

EPDs	
CE	9.3
BW	1.4
WW	68
YW	95
ADG	0.17
MCE	4.7
Milk	19.6
MWW	53.6
Stay	18.6
Marb	-0.08
REA	0.65
API	119.5
TI	65.9

- Performance, maternal, and calving ease pedigree
- Dark red son of Red Nation who is stylish and stout made in a moderate frame. His dam is a moderate, Fertile, easy keeping cow that works har for us.

## G977 KLSR WHISKEY G977

BD	Color	%Sim	Act. BW/Ratio	205/Ratio	P/S
3/6/19	R	PB	93/98	795/100	P
<p>TNT BOOTLEGGER Z268 MRL RED WHISKEY 101B MRL MISS 677Y</p> <p>KLSR WHISKEY G977 3647947 OLF RED PATRIARCH W124</p> <p>Z88 KLSR FANTASY GIRL 901W</p>					

EPDs	
CE	7
BW	3.3
WW	84
YW	120.4
ADG	0.23
MCE	5.9
Milk	19.3
MWW	61.2
Stay	19
Marb	0.04
REA	0.89
API	127.2
TI	76.2

- Powerful performance and maternal pedigree
- Long bodied, thick, and heavy muscled
- Red whiskey has done a great job for us and this another example

## G983 KLSR MR FLUSH G983

BD	Color	%Sim	Act. BW/Ratio	205/Ratio	P/S
3/7/19	R	PB	84/106	749/94	P
<p>NUG ROYAL RED 324A IPU ROYAL FLUSH 4C BLACKSAND SHANIA 16Y</p> <p>KLSR MR FLUSH G983 3647935 KLSR MORNING DOVE Y10 KLSR GLAMOUR C510 KLSR MS ATOMIC Z21</p>					

EPDs	
CE	8.2
BW	2.6
WW	71.3
YW	107.7
ADG	0.23
MCE	5.2
Milk	22.7
MWW	58.3
Stay	19
Marb	-0.06
REA	0.81
API	120.9
TI	67.8

- Powerful performance and maternal pedigree
- Combination of Royal flush and Morning Dove will make for some great females as the flush daughters have been phenomenal. They possess great udders, are easy keeping, big bodied, and look to become very functional cows. The dove daughters are tremendous as well.
- Dam is a thick made, soggy broody cow, that has done great for us.

## G984 KLSR WHISKEY G984

BD	Color	%Sim	Act. BW/Ratio	205/Ratio	P/S
3/8/19	R	PB	92/95	678/85	P
<p>TNT BOOTLEGGER Z268 MRL RED WHISKEY 101B MRL MISS 677Y</p> <p>KLSR WHISKEY G984 3647936 KS COMMISSION B739</p> <p>D717 KSR PRECIOUS 880T</p>					

EPDs	
CE	5.2
BW	4.7
WW	74.8
YW	108.4
ADG	0.21
MCE	4.7
Milk	18.1
MWW	55.5
Stay	16.9
Marb	-0.01
REA	0.84
API	112.7
TI	67.7

- Calving ease, maternal pedigree
- Moderate framed soggy whiskey son that could possibly suited for heifers
- Her bull calf last year went to Brad Gartner, SD, as a calving ease heifer bull



## G992 KLSR NATIONWIDE G992

BD	Color	%Sim	Act. BW/Ratio	205/Ratio	P/S
3/11/19	R	PB	92/93	870/109	P
<p>KLSR RED NATION C545 KLSR NATION WIDE E702 KLSR MS ATOMIC Z21</p> <p>KLSR NATIONWIDE G992 36477874 KUNTZ SHERIFF 8A KLSR MISS SHERIFF E718 KLSR CLARITY C561</p>					

EPDs	
CE	10.2
BW	2.3
WW	78.3
YW	113.5
ADG	0.22
MCE	5.5
Milk	23.8
MWW	62.9
Stay	19.5
Marb	-0.09
REA	0.64
API	124.7
TI	71.5

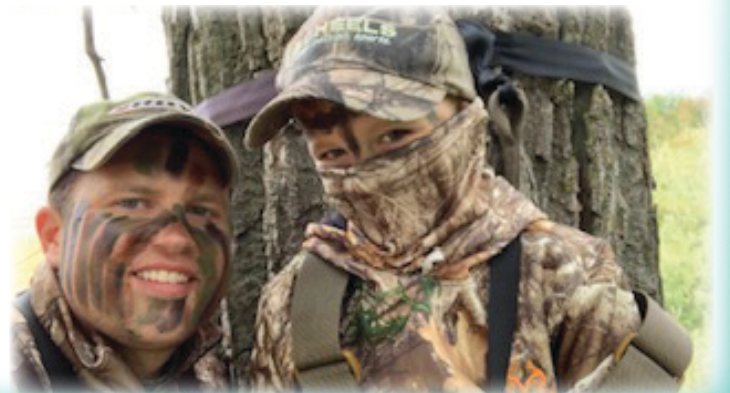
- Powerful Performance and maternal pedigree
- Has been a dark cherry red standout all year. Thick, soggy, long bodied, rugged herd bull prospect. His Grandam, C561 also has the standout G1057 bull in the sale also.
- Nation Wide has been a surprise and a blessing for us using him to clean up our red heifers. His calves Grow rapidly and in most cases caught or surpassed the older AI sired calves out of our 1st calvers. We are excited to get his daughters into production as they look outstanding in the heifer pen.

## G993 KLSR MR NATION WIDE G993

BD	Color	%Sim	Act. BW/Ratio	205/Ratio	P/S
3/11/19	R	PB	93/92	840/105	P
<p>KLSR RED NATION C545 KLSR NATION WIDE E702 KLSR MS ATOMIC Z21</p> <p>KLSR MR NATION WIDE G993 3647882 IPU ROYAL FLUSH 4C KLSR MISS FLUSH E819 KLSR STUN GUN X36</p>					

EPDs	
CE	8.4
BW	3.6
WW	77.8
YW	111.1
ADG	0.21
MCE	5.2
Milk	21.8
MWW	60.6
Stay	19
Marb	0.01
REA	0.67
API	124.4
TI	71.6

- Performance, calving ease, and maternal pedigree
- Another Nation wide that is going to grow into a powerful herd bull. The combo of his Flush mom and Nation Wide stack up some great cow families. We can't say enough good things about the powerful Flush daughter as a whole





## G996 KLSR POWER UP G996

BD	Color	%Sim	Act. BW/Ratio	205/Ratio	P/S
3/13/19	R	PB	85/105	777/97	P

ASM WIDELOAD 303B  
DCR MR POWER UP E68  
DCR MS R/SABRE A355  
KLSR POWER UP G996 3647933  
CDI KING RED 216Y  
C571  
KLSR MS ATOMIC Z40

EPDs	
CE	7.5
BW	2.4
WW	77.6
YW	114
ADG	0.23
MCE	4.9
Milk	19
MWW	57.8
Stay	19.9
Marb	-0.01
REA	1.02
API	127.2
TI	72.8

- Performance, calving ease and maternal Pedigree
- Power up was used clean up on a small group of red cows and we couldn't be happier with his calves. They are a young group in the pen but they all possess great thickness and powerful phenotypes, and his daughters might be the best thing he gave us. They are all very broody, thick, attractive looking females.

## G1001 KLSR POWER UP G1001

BD	Color	%Sim	Act. BW/Ratio	205/Ratio	P/S
3/15/19	R	PB	100/	806/	P

ASM WIDELOAD 303B  
DCR MR POWER UP E68  
DCR MS R/SABRE A355  
KLSR POWER UP G1001 N/A  
KLSR RED TRAIN B82  
D638

EPDs	
CE	n/a
BW	n/a
WW	n/a
YW	n/a
ADG	n/a
MCE	n/a
Milk	n/a
MWW	n/a
Stay	n/a
Marb	n/a
REA	n/a
API	n/a
TI	n/a

- Performance and maternal pedigree
- Another stout thick made powerup son.

## G1003 KLSR PROVINCE G1003

BD	Color	%Sim	Act. BW/Ratio	205/Ratio	P/S
3/16/19	B	3/4SM 1/4AN	99/92	904/113	P

MRL EL TIGRE 52Z  
WLB MANITOBA 52Z 435B  
WLB 381T BETH 375W  
KLSR PROVINCE G1003 3647921  
TNT TANKER U263  
KLSR MISS TANKER B24  
KLSR MISS 878 X16

EPDs	
CE	5.7
BW	4.1
WW	85.6
YW	121.6
ADG	0.23
MCE	3.8
Milk	16.4
MWW	59.2
Stay	17
Marb	-0.07
REA	1.01
API	114.6
TI	72.8

- Powerful Performance and maternal pedigree
- Here is your larger framed power bull. He carries that extra length with thickness and muscle built in. He has been a stand-out all year along side his powerful blaze faced Tanker dam. He was our 3rd heaviest calf at weaning time while having a mid march birthday. His grandam is our X18 New Design 878 cow that never misses, so the potential for some great daughters is definitely there

## G1007 G1007

BD	Color	%Sim	Act. BW/Ratio	205/Ratio	P/S
3/18/19	B	PB	95/98	775/107	P

ES RIDGERIDER YW3  
DCR MR MAIN ATTRACTION E18  
DCR MS TOP GRADE C238  
G1007 3664729  
R PLUS HARD ROCK 145X  
ELLINGSON HARDROCK C5030  
ELLINGSON MS GANUFF 02K

EPDs	
CE	4
BW	4.2
WW	80.1
YW	124.9
ADG	0.28
MCE	2.5
Milk	24.5
MWW	63.1
Stay	17.4
Marb	-0.1
REA	0.93
API	112.1
TI	70.3

- Performance and maternal pedigree
- Long bodied, thick made main attraction son. His dam was purchased from Terry Ellingson. She is an easy keeper and a daughter of Terrys 02K donor cow.

## G1015 KLSR MR FLUSH G1015

BD	Color	%Sim	Act. BW/Ratio	205/Ratio	P/S
3/21/19	R	PB	98/93	804/101	P

NUG ROYAL RED 324A  
IPU ROYAL FLUSH 4C  
BLACKSAND SHANIA 16Y  
KLSR MR FLUSH G1015 3647942  
TNT GUNNER N208  
DSR PASSION U1  
DSR OH! MY S899

EPDs	
CE	4.2
BW	5.4
WW	77.2
YW	116.4
ADG	0.24
MCE	1.8
Milk	24.5
MWW	63.1
Stay	17.9
Marb	-0.1
REA	0.67
API	108.1
TI	66.1

- Powerful performance and maternal pedigree
- Here is a larger framed red power bull out of none other than our U1 cow who is the dam to KLSR Red Nation C545 who was purchased by Kunkel Simmentals in our 2016 sale. She has raised many other bulls working for Dennis Morlock, Hertz Ranch and Reimche Land and Cattle to name a few. She is one of the most recognized cows on the place and still looks great and is coming due with another AI calf this spring.
- G1015 will add performance with out a doubt but being sired by Flush, his daughters could be his best asset.

## G1018 KLSR WHISKEY G1018

BD	Color	%Sim	Act. BW/Ratio	205/Ratio	P/S
3/8/19	R	PB	92/99	753/94	P

TNT BOOTLEGGER Z268  
MRL RED WHISKEY 101B  
MRL MISS 677Y  
KLSR WHISKEY G1018 3647938  
CDI KING RED 216Y  
KLSR QUEEN RED A45  
KBHR T180

EPDs	
CE	8
BW	3
WW	75.1
YW	107.8
ADG	0.2
MCE	6.7
Milk	19.2
MWW	56.7
Stay	18.2
Marb	0.03
REA	0.85
API	124
TI	71.4

- Performance and maternal pedigree
- Another Flush son that is a moderate stout made calf. His Mother is a keeping good uddered King Red daughter that works hard for us.

## G1020 KLSR MAIN ATTRACTION G1020

BD	Color	%Sim	Act. BW/Ratio	205/Ratio	P/S
3/23/19	B	3/4SM 1/2 CS	87/105	782/98	P

ES RIDGERIDER YW3  
DCR MR MAIN ATTRACTION E18  
DCR MS TOP GRADE C238  
KLSR MAIN ATTRACTION G1020 3647926  
DIKEMANS SURE BET  
KLSR BET 52 X6  
KLSR U813

EPDs	
CE	7.6
BW	1.3
WW	60.9
YW	88.1
ADG	0.17
MCE	4
Milk	26.8
MWW	57.2
Stay	17.3
Marb	0.11
REA	0.81
API	123.7
TI	67.7

- Performance, calving ease, and maternal pedigree
- A Main Attraction son that has been a eye catcher all summer. His dam is a heavy milking cow that does a great job and has a couple good daughters that we have retained. He should add maternal strength and pounds to a set of calves.

## G1026 KLSR SPEED DEMON

BD Color %Sim Act. BW/Ratio 205/Ratio P/S  
3/23/19 B 1/2SM 1/2 AN 70/118 / P

S A V TEN SPEED 3022  
KLSR SPEED DEMON E708  
C578  
KLSR SPEED DEMON 3647883  
LFE THE RIDDLER 323B  
KLSR MISS RIDDLER E720  
KLSR MISS IMAGE Z10

- Performance, calving ease and maternal pedigree
- Speed demon worked well cleaning up or bred heifers. His calves are attractive, stout and heavy muscled. Its nice having a herd bull who can sire calves like this out of 1st calf heifers. His dam is Riddler daughter with a great udder. A lot of performance in his pedigree.

EPDs	
CE	12.4
BW	-0.2
WW	71.3
YW	115
ADG	0.27
MCE	7
Milk	23.5
MWW	59.1
Stay	15.4
Marb	0.35
REA	0.67
API	136.4
TI	76.9

## G1029 KLSR MANITOBA G1029

BD Color %Sim Act. BW/Ratio 205/Ratio P/S  
3/24/19 B PB 93/98 807/101 P

MRL EL TIGRE 52Z  
WLB MANITOBA 52Z 435B  
WLB 381T BETH 375W  
KLSR MANITOBA G1029 3647932  
BAS HEAVY DUTY  
KS ADDISON A520  
THSR ROSEANNA R522

- Performance and maternal pedigree
- Dam was purchased from Kenners through the ND state classic sale. She has been a very easy keeping cow for us. He will add length and growth to his calves.

EPDs	
CE	5.9
BW	4
WW	75
YW	111.9
ADG	0.23
MCE	2.4
Milk	15.6
MWW	53.1
Stay	16.4
Marb	-0.02
REA	0.79
API	113.5
TI	68

## G1033 KLSR POWER UP G1033

BD Color %Sim Act. BW/Ratio 205/Ratio P/S  
3/28/19 R 3/4SM 1/4AN 94/94 840/100 P

ASM WIDELoad 303B  
DCR MR POWER UP E68  
DCR MS R/SABRE A355  
KLSR POWER UP G1033 3664032  
RENDEZVOUS MIDNIGHT 442B  
KLSR MS MIDNIGHT D021  
21

- Performance and maternal pedigree
- Long bodied red blaze faced bull out of very powerful midnight daughter. We crossed our two fullblood herd bulls (Midnight and Locomotive) with purebred black Angus cows. That mating left us with some tremendous powerful F1 daughters.

EPDs	
CE	3.9
BW	4.2
WW	79.9
YW	116.1
ADG	0.23
MCE	3.3
Milk	20
MWW	67.5
Stay	16.6
Marb	0.03
REA	0.89
API	104
TI	67.2

## G1034 KLSR MANITOBA G1034

BD Color %Sim Act. BW/Ratio 205/Ratio P/S  
3/28/19 B PB 90/100 852/107 P

MRL EL TIGRE 52Z  
WLB MANITOBA 52Z 435B  
WLB 381T BETH 375W  
KLSR MANITOBA G1034 3647950  
KOP GRIZZLY 161A  
KLSR MISS GRIZ C525  
BGL MS ABERDEEN Y115B

- Powerful performance, calving ease, and maternal pedigree
- This is a pretty cool calf that we are quite excited about. He is stout made, long bodied, and very attractive. His dam is earning herself quite a track record at a young age as she is also the grandam of the G902 bull in the sale.

EPDs	
CE	5.9
BW	3.5
WW	77.2
YW	105.5
ADG	0.18
MCE	2.6
Milk	18.5
MWW	57.1
Stay	17
Marb	-0.03
REA	0.92
API	114.1
TI	69.4

## G1041 KLSR POWER UP G1041

BD Color %Sim Act. BW/Ratio 205/Ratio P/S  
3/29/19 R PB 75/ 790/ P

ASM WIDELoad 303B  
DCR MR POWER UP E68  
DCR MS R/SABRE A355  
KLSR POWER UP G1041 3665016  
ELLINGSON PINNACLE A319  
ELLINGSON PINNACLE C5014  
ELLINGSON KLONDIKE A389

- Performance, maternal and calving ease pedigree
- Stout moderate framed power up son. We purchased his dam from Terry Ellingson.

EPDs	
CE	6.4
BW	3
WW	74.1
YW	112.4
ADG	0.24
MCE	4.8
Milk	23.2
MWW	60.3
Stay	19.2
Marb	-0.1
REA	1.01
API	118
TI	68.3

## G1040 KLSR MANITOBA G1040

BD Color %Sim Act. BW/Ratio 205/Ratio P/S  
3/29/19 B PB 91/99 800/100 P

MRL EL TIGRE 52Z  
WLB MANITOBA 52Z 435B  
WLB 381T BETH 375W  
KLSR MANITOBA G1040 3647925  
TNT TANKER U263  
KLSR MISS TANKER B43  
DSR DAKOTA LUSH S774

- Performance and maternal pedigree
- A stout thick made calf that has always had that herd bull look to him. We are getting to the younger calves in the sale, but we feel this guy will grow up to be quite impressive.

EPDs	
CE	4.7
BW	3.7
WW	78.2
YW	111.7
ADG	0.21
MCE	3.6
Milk	17.8
MWW	56.9
Stay	17.6
Marb	-0.18
REA	1.04
API	107
TI	66.5

## G1043 KLSR MAIN ATTRACTION G1043

BD Color %Sim Act. BW/Ratio 205/Ratio P/S  
3/29/19 B PB 94/97 769/96 P

ES RIDGERIDER YW3  
DCR MAIN ATTRACTION E18  
DCR MS TOP GRADE C238  
KLSR MAIN ATTRACTION G1043 3647948  
BAS HEAVY DUTY  
KS MISS HEAVY DUTY A634  
KS TALLULAH T160

- Performance and maternal pedigree
- He is the blaze-face bull featured on our cover!
- This calf has been an attention getter all year long. He is very attractive made and was admired by many at our appreciation supper in September. Very balanced and structurally sound with a perfect blaze face. His dam raised a good bull last year that sold to the Faul Family, McClusky ND, and is working well for them.

EPDs	
CE	6.2
BW	3.9
WW	73.0
YW	108.7
ADG	0.22
MCE	3.3
Milk	22
MWW	58.4
Stay	18.5
Marb	0.03
REA	0.89
API	120.7
TI	69.2

## G1044 KLSR MANITOBA G1044

BD Color %Sim Act. BW/Ratio 205/Ratio P/S  
3/31/19 B 3/4SM 1/4AN 92/100 762/95 P

MRL EL TIGRE 52Z  
WLB MANITOBA 52Z 435B  
WLB 381T BETH 375W  
KLSR MANITOBA G1044 3647940  
S A V HARVESTOR 0338  
KLSR MS HARVESTER B11  
DSR DAKOTA POLLY T446

- Performance and Maternal Pedigree
- Another younger calf in the sale that has that stout herd bull look. He will grow into a stout moderate framed herd bull when he is done.

EPDs	
CE	6
BW	3.3
WW	72
YW	106.5
ADG	0.22
MCE	2.1
Milk	17
MWW	53
Stay	16
Marb	0.06
REA	0.72
API	106.4
TI	64.2

## G1049 KLSR MAIN ATTRACTION G1049

BD	Color	%Sim	Act. BW/Ratio	205/Ratio	P/S
4/6/19	B	3/4SM 1/4SM	98/93	708/89	P

ES RIDGERIDER YW3  
DCR MR MAIN ATTRACTION E18  
DCR MS TOP GRADE C238  
KLSR MAIN ATTRACTION G1049 <sup>3647894</sup>  
KS BLACK DIAMOND W992  
KLSR PRINCESS CUT Z27  
KLSR U820

EPDs	
CE	3.9
BW	4.2
WW	62.6
YW	97.2
ADG	0.22
MCE	1.1
Milk	26.5
MWW	57.7
Stay	16.5
Marb	-0.06
REA	0.96
API	105
TI	60.8

- Performance and maternal pedigree
- A younger calf in the sale that is going to grow into an impressive herdbull. He has had a herdbull look to him from day one. Keep in mind the age of these younger calves when filtering through the pens. Don't miss this guy.

## G1054 KLSR POWER UP G1054

BD	Color	%Sim	Act. BW/Ratio	205/Ratio	P/S
4/9/19	R	1/2SM 1/2CS	86/106	800/100	P

ASM WIDELOAD 303B  
DCR MR POWER UP E68  
DCR MS R/SABRE A355  
KLSR POWER UP G1054 <sup>3647927</sup>  
THSF FREEDOM 300N  
X1  
KBHR T180

EPDs	
CE	8.8
BW	0
WW	67
YW	100.7
ADG	0.21
MCE	5.8
Milk	20.8
MWW	54.3
Stay	20.8
Marb	-0.08
REA	1.01
API	117.3
TI	63.7

- Performance, calving ease, and maternal pedigree
- This calf impressed us with how fast he caught up with his older brothers. He is young but there is a lot of maternal power in his dam.



## G1057 KLSR POWER UP G1057

BD	Color	%Sim	Act. BW/Ratio	205/Ratio	P/S
4/10/19	R	PB	94/95	906/113	P

ASM WIDELOAD 303B  
DCR MR POWER UP E68  
DCR MS R/SABRE A355  
KLSR POWER UP G1057 <sup>3647951</sup>  
THR NORTHERN 2109  
KLSR CLARITY C561  
KBHR T230

EPDs	
CE	4.1
BW	4.1
WW	89
YW	130.1
ADG	0.26
MCE	2.3
Milk	20.3
MWW	64.7
Stay	18.3
Marb	-0.02
REA	1.02
API	119.6
TI	76.3

- Powerful performance and maternal pedigree
- We couldn't figure out why this calf was tagged 1057 when we were sorting at weaning time. We had to check the calving book that night to see if we made a mistake. He is the 2nd youngest calf in the sale and you will never know it when you look through the pen. His picture is a pretty good representation of what he looks like and when he hit the scale we were impressed. His dam is also the grandam of the standout G992 bull in the sale. Big time herd bull potential

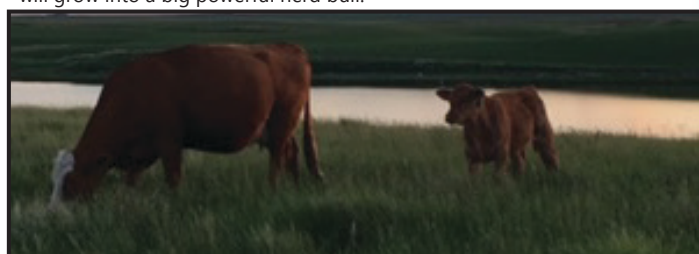
## G1060 KLSR MR FLUSH G 1060

BD	Color	%Sim	Act. BW/Ratio	205/Ratio	P/S
4/13/19	R	PB	96/95	856/107	P

NUG ROYAL RED 324A  
IPU ROYAL FLUSH 4C  
BLACKSAND SHANIA 16Y  
KLSR MR FLUSH G 1060 <sup>3647906</sup>  
OLF RED PATRIARCH W124  
KLSR MS 205Z  
821

EPDs	
CE	5.7
BW	3.9
WW	74.5
YW	110.8
ADG	0.23
MCE	3.9
Milk	20.7
MWW	57.9
Stay	17.1
Marb	-0.04
REA	0.86
API	113.7
TI	67.9

- Powerful Performance and maternal pedigree
- He is the youngest bull in the sale but one that should not be overlooked. He has been a favorite of ours all year. He has carried that herd bull presence, thickness and muscle shape from day one. He has an awesome cow family behind him. He will grow into a big powerful herd bull.



KLSR MR FLUSH G 1060 and dam

# Open Heifers

## G905 KLSR MS LOCK DOWN G905

BD	Color	%Sim	Act. BW/Ratio	205/Ratio	P/S
2/18/19	B	3/4SM 1/4AN	78/102	610/102	P

REMINGTON LOCK N LOAD54U  
W/C LOCK DOWN 206Z  
G C F MISS NEW LEVELR206  
KLSR MS LOCK DOWN G905 3647881  
IPU ROYAL FLUSH 4C  
KLSR MISS FLUSH E750  
Z88

EPDs	
CE	10.5
BW	0.3
WW	77.2
YW	118.8
ADG	0.26
MCE	6.7
Milk	23.8
MWW	62.4
Stay	18
Marb	0.23
REA	0.76
API	133.3
TI	76.5

- Unique pedigree, Hetero black, blaze faced female. Her dam is a long thick powerhouse flush daughter.

## G911 KLSR MS NATION G911

BD	Color	%Sim	Act. BW/Ratio	205/Ratio	P/S
2/20/19	R	3/4SM 1/4CS	73/116	580/99	P

THR NORTHERN 2109  
KLSR RED NATION C545  
DSR PASSION U1  
KLSR MS NATION G911 3657219  
3D RED POWER 150Z  
KLSR MISS RED POWER B1  
X1

EPDs	
CE	9.9
BW	-0.5
WW	68.5
YW	98.1
ADG	0.19
MCE	5.7
Milk	25.6
MWW	59.8
Stay	19.7
Marb	-0.13
REA	0.74
API	124.1
TI	68.3

- Dark red Red Nation daughter. Dam is moderate, well uddered female.

## G903 KLSR MS UNION G903

BD	Color	%Sim	Act. BW/Ratio	205/Ratio	P/S
2/16/19	B	3/4SM 1/4AN	68/114	579/97	P

TNT BCR UNIFIED B203  
TNT UNION D385  
TNT MISS B91  
KLSR MS UNION G903 3647888  
KLSR RED NATION C545  
KLSR MISS NATION E765  
KLSR MISS 806U

EPDs	
CE	9.3
BW	0.6
WW	72.5
YW	105.6
ADG	0.21
MCE	4.7
Milk	21
MWW	57.2
Stay	14.8
Marb	0.08
REA	0.62
API	114.3
TI	69.2

- Union x Sheriff combo. Same cow family as G949 bull in the sale

## G907 KLSR MS RIDDLER G907

BD	Color	%Sim	Act. BW/Ratio	205/Ratio	P/S
2/18/19	B	PB	84/98	568/97	P

LFE GOTHAM 819Y  
LFE THE RIDDLER 323B  
LFE BS CHARO 23Y  
KLSR MS RIDDLER G907 3657189  
WLB MANITOBA 522 435B  
D697  
KLSR MS ATOMIC Z40

EPDs	
CE	5.7
BW	3.4
WW	86.5
YW	129.7
ADG	0.27
MCE	4.7
Milk	17.4
MWW	60.6
Stay	19.6
Marb	-0.04
REA	0.98
API	124.8
TI	75.8

## G915 KLSR MS UNION G915

BD	Color	%Sim	Act. BW/Ratio	205/Ratio	P/S
2/21/19	B	3/4SM 1/4AN	68/	556/	P

TNT BCR UNIFIED B203  
TNT UNION D385  
TNT MISS B91  
KLSR MS UNION G915 3647905  
LFE THE RIDDLER 323B  
KLSR MISS RIDDLER E738  
DSR BOTTOM LINE T362

EPDs	
CE	7.2
BW	2.5
WW	83.2
YW	130
ADG	0.29
MCE	4.9
Milk	21
MWW	62.6
Stay	16.5
Marb	0.21
REA	0.69
API	124
TI	76.5

- Twin to G916. Powerful pedigree with Union and Riddler. Dam is an attractive powerful female that will have a bright future here. Don't let their size turn you away, she raised them both and weaned 1000lbs of calf as a first calver and is bred up on time as well

## G916 KLSR MS UNION G916

BD	Color	%Sim	Act. BW/Ratio	205/Ratio	P/S
2/21/19	B	3/4SM 1/4AN	68/	535/	P

TNT BCR UNIFIED B203  
TNT UNION D385  
TNT MISS B91  
KLSR MS UNION G916 3647905  
LFE THE RIDDLER 323B  
KLSR MISS RIDDLER E738  
DSR BOTTOM LINE T362

EPDs	
CE	7.2
BW	2.5
WW	83.2
YW	130
ADG	0.29
MCE	4.9
Milk	21
MWW	62.6
Stay	16.5
Marb	0.21
REA	0.69
API	124
TI	76.5

- Twin to G915. Powerful pedigree with Union and Riddler. Dam is an attractive powerful female that will have a bright future here. Don't let their size turn you away, she raised them both and weaned 1000lbs of calf as a first calver and is bred up on time as well



### G920 KLSR MS RIDDLER G920

BD	Color	%Sim	Act. BW/Ratio	205/Ratio	P/S
2/24/19	B	PB	80/104	622/95	P

LFE GOTHAM 819Y  
LFE THE RIDDLER 323B  
LFE BS CHARO 23Y  
KLSR MS RIDDLER G920 3657185  
WLB MANITOBA 52Z 435B  
D716  
KSR TRIUMPH 271Y

• Deep bodied riddler daughter. We have been pleased with the riddler progeny as a whole. They are hard to part with.

EPDs	
CE	5.9
BW	3.5
WW	90
YW	137.6
ADG	0.3
MCE	5.5
Milk	15.6
MWW	60.5
Stay	19.4
Marb	0.01
REA	1.03
API	128.6
TI	78.7

### G956 KLSR MS BLUEPRINT G956

BD	Color	%Sim	Act. BW/Ratio	205/Ratio	P/S
3/3/19	B	3/4SM 1/4AN	89/98	615/105	P

LRS GRADE BREAK 114B  
QB BLUEPRINT D47  
RUST MISS 452B  
KLSR MS BLUEPRINT G956 3657227  
TC ABERDEEN 759  
KS MISS ABERDEEN A8349  
KS KAYLA J497

• This is a tough one to part with. She is stout, thick made blue print daughter. Her dam was purchased from Kenner and is a daughter of their Kayla Donor.

EPDs	
CE	8.9
BW	2.9
WW	78.4
YW	124.4
ADG	0.29
MCE	5.9
Milk	23.9
MWW	63.1
Stay	18.9
Marb	0.17
REA	1
API	127.3
TI	73.4

### G963 KLSR MS SPEED DEMOM

BD	Color	%Sim	Act. BW/Ratio	205/Ratio	P/S
3/4/19	B	5/8SM 3/8AN	89/89	608/102	P

S A V TEN SPEED 3022  
KLSR SPEED DEMON E708  
C578  
KLSR MS SPEED DEMOM 3647902  
WLB MANITOBA 52Z 435B  
KLSR MISS MANITOBA E827  
KS MISS ABERDEEN A8349

• This heifer always attracted my attention during the summer. The speed demon calves are very stylish and attractive. She has a good cow family behind her.

EPDs	
CE	9.4
BW	3.3
WW	75.1
YW	117.6
ADG	0.27
MCE	4.7
Milk	20
MWW	57.5
Stay	15.4
Marb	0.25
REA	0.82
API	122
TI	71.9

### G966 KLSR MS UNION G966

BD	Color	%Sim	Act. BW/Ratio	205/Ratio	P/S
3/4/19	B	PB	90/84	659/110	P

TNT BCR UNIFIED B203  
TNT UNION D385  
TNT MISS B91  
KLSR MS UNION G966 3664038  
LFE THE RIDDLER 323B  
KLSR MISS RIDDLER E725  
KSR TRIUMPH 419A

• Sale Feature!!! This is the daughter out our consignment to the ND State classic sale last year. She was purchased by good friends, Customer, and neighbor Steichen Farms. We kept her here to calve her and breed her back. This was a candidate to consign to that sale again this year, but with the fall we had we decided to skip the state sale and offer her here. We feel she will make a great addition to anyone's operation. She shares the same grandam as the C501 donor that Dolls bought from us as an open heifer a few years ago.

EPDs	
CE	7.3
BW	3.1
WW	92.2
YW	142.1
ADG	0.31
MCE	7
Milk	20.4
MWW	64.6
Stay	16.8
Marb	0.11
REA	0.79
API	131.8
TI	83.3

### G987 KLSR MS DEMON G987

BD	Color	%Sim	Act. BW/Ratio	205/Ratio	P/S
3/8/19	B	3/4SM 1/4AN	73/105	597/100	P

S A V TEN SPEED 3022  
KLSR SPEED DEMON E708  
C578  
KLSR MS DEMON G987 3664030  
KLSR SHIMMER Z33  
E798  
C571

• Another attractive Speed Demon daughter that will make a great cow.

EPDs	
CE	11.9
BW	1.5
WW	71.2
YW	113.6
ADG	0.26
MCE	5.9
Milk	20.1
MWW	55.7
Stay	16.8
Marb	0.2
REA	0.85
API	126.5
TI	70.9

### G998 KLSR MS FLUSH G998

BD	Color	%Sim	Act. BW/Ratio	205/Ratio	P/S
3/13/19	R	3/4SM 1/4CS	68/	512/	P

NUG ROYAL RED 324A  
IPU ROYAL FLUSH 4C  
BLACKSAND SHANIA 16Y  
KLSR MS FLUSH G998 3657194  
CDI KING RED 216Y  
KLSR QUEEN RED A3  
KLSR U823

• Twin to G999. These two were raised by momma since birth. Their pedigree has them set up for success. The Flush daughters are going to some of our best females.

EPDs	
CE	7.3
BW	3.2
WW	78.6
YW	119.6
ADG	0.26
MCE	5.6
Milk	20.6
MWW	59.8
Stay	17.4
Marb	-0.06
REA	1.01
API	118.8
TI	71.4

### G999 KLSR MS FLUSH G999

BD	Color	%Sim	Act. BW/Ratio	205/Ratio	P/S
3/13/19	R	3/4SM 1/4CS	68/	502/	P

NUG ROYAL RED 324A  
IPU ROYAL FLUSH 4C  
BLACKSAND SHANIA 16Y  
KLSR MS FLUSH G999 3657194  
CDI KING RED 216Y  
KLSR QUEEN RED A3  
KLSR U823

• Twin to G998. These two were raised by momma since birth. Their pedigree has them set up for success. The Flush daughters are going to some of our best females.

EPDs	
CE	7.3
BW	3.2
WW	78.6
YW	119.6
ADG	0.26
MCE	5.6
Milk	20.6
MWW	59.8
Stay	17.4
Marb	-0.06
REA	1.01
API	118.8
TI	71.4

### G1006 KLSR MS DEMON G1006

BD	Color	%Sim	Act. BW/Ratio	205/Ratio	P/S
3/18/19	B	5/8SM 3/8AN	90/89	635/107	P

S A V TEN SPEED 3022  
KLSR SPEED DEMON E708  
C578  
KLSR MS DEMON G1006 3647912  
LFE THE RIDDLER 323B  
KLSR BLACK BEAUTY E747  
BGL MS ABERDEEN Y115B

• Larger framed heifer. Riddler x Speed Demon should be a great combo.

EPDs	
CE	9.5
BW	3.4
WW	80.5
YW	129.9
ADG	0.31
MCE	5.3
Milk	22.2
MWW	62.4
Stay	15.7
Marb	0.36
REA	0.77
API	131.2
TI	78.1



### G1013 KLSR MS MAIN ATTRACTION G1013

BD	Color	%Sim	Act. BW/Ratio	205/Ratio	P/S
3/20/19	B	PB	85/101	601/90	P

ES RIDGERIDER YW3  
DCR MR MAIN ATTRACTION E18  
DCR MS TOP GRADE C238  
KLSR MS MAIN ATTRACTION G1013 3647900  
BAS HEAVY DUTY  
KS MISS HEAVY DUTY A858  
WCS MS TINY 0006X

- Dam was purchased as the high selling bred heifer 2015.

EPDs	
CE	7.7
BW	2.3
WW	69.9
YW	112
ADG	0.26
MCE	5
Milk	24.7
MWW	59.6
Stay	19.3
Marb	0.18
REA	0.74
API	134.7
TI	73.4

### G1024 KLSR MS WHISKEY NATION

BD	Color	%Sim	Act. BW/Ratio	205/Ratio	P/S
3/22/19	R	PB	82/97	609/102	P

KLSR RED NATION C545  
KLSR NATION WIDE E702  
KLSR MS ATOMIC Z21  
KLSR MS WHISKEY NATION 3647868  
MRL RED WHISKEY 101B  
KLSR MISS WHISKEY E778  
KLSR QUEEN RED A51

- Broody made heifer that should make a great cow. Her sire, Nation Wide is backed by a tremendous cow family and his first progeny look phenomenal. Being mothered by a great looking Red Whiskey cow doesn't hurt either.

EPDs	
CE	8
BW	3.3
WW	74.7
YW	106
ADG	0.2
MCE	5.8
Milk	19.8
MWW	57.1
Stay	19.3
Marb	-0.01
REA	0.64
API	122.5
TI	69.4

### G1031 KLSR MS PWR PLAY G1031

BD	Color	%Sim	Act. BW/Ratio	205/Ratio	P/S
3/25/19	B	3/4SM 1/4AN	79/102	655/109	P

KS EMBASSY Z7512  
KS POWER PLAY B661  
KS TATUM T433  
KLSR MS PWR PLAY G1031 3664039  
RENDEZVOUS MIDNIGHT 442B  
KLSR MS MIDNIGHT D025  
25

- Long bodied powerful heifer with some full blood genetics in the pedigree. Should make a great cow.

EPDs	
CE	7.2
BW	2.8
WW	77.8
YW	113.7
ADG	0.22
MCE	3.5
Milk	22.4
MWW	68.6
Stay	15.9
Marb	-0.05
REA	0.72
API	104.2
TI	66.4

### G1045 KLSR MS FLUSH G1045

BD	Color	%Sim	Act. BW/Ratio	205/Ratio	P/S
3/22/19	R	PB	72/117	591/100	P

NUG ROYAL RED 324A  
IPU ROYAL FLUSH 4C  
BLACKSAND SHANIA 16Y  
KLSR MS FLUSH G1045 3657208  
OLF RED PATRIARCH W124  
Z97  
DSR BEDAZZELED R742

- Dark cherry red, thick, and attractive. If this female was a month older, she would be staying home. She will make a great breeding piece for her new owner. We calved our first flush females in 2019 and they were all did a great job. We are excited about their future.

EPDs	
CE	8.5
BW	1
WW	69.9
YW	105.2
ADG	0.22
MCE	6.5
Milk	22.3
MWW	57.3
Stay	19.6
Marb	-0.01
REA	0.83
API	127
TI	69.9

### G1048 KLSR MS PWR PLAY G1048

BD	Color	%Sim	Act. BW/Ratio	205/Ratio	P/S
4/6/19	B	3/4SM 1/4 AN	84/96	577/96	P

KS EMBASSY Z7512  
KS POWER PLAY B661  
KS TATUM T433  
KLSR MS PWR PLAY G1048 3664034  
RENDEZVOUS LOCOMOTIVE 80B  
KLSR MS LOCO D168  
168

- This is just a cool looking heifer. Soggy, deep, and loose made, and some chrome to boot. She is an eye catcher and will make a great cow. Her mother is F1 Angus x fullblood cross, they make great cows.

EPDs	
CE	7.1
BW	3.2
WW	71.5
YW	105.6
ADG	0.21
MCE	3.5
Milk	25.6
MWW	70.5
Stay	16.7
Marb	-0.03
REA	0.77
API	103.7
TI	63

### G1050 KLSR MS MANITOBA G1050

BD	Color	%Sim	Act. BW/Ratio	205/Ratio	P/S
4/6/19	B	3/4SM 1/4AN	89/97	617/105	P

MRL EL TIGRE 52Z  
WLB MANITOBA 52Z 435B  
WLB 381T BETH 375W  
KLSR MS MANITOBA G1050 3657180  
DIKEMANS SURE BET  
X27  
KLSR U819

- Stout made Manitoba daughter. Her dam is a moderate, hard working cow for us.

EPDs	
CE	7.3
BW	3.1
WW	71.4
YW	95.4
ADG	0.15
MCE	3.2
Milk	14.5
MWW	50.1
Stay	17.2
Marb	-0.03
REA	0.89
API	114.8
TI	66.5

*Commercial Bred Heifers*

*Also Selling* **50-75 BLACK & BLACK BALDY SIMMENTAL & SIMANGUS™ COMMERCIAL BRED HEIFERS**

AI bred to KLSR Black Roller B36 and KLSR E700 (Kuntz Sheriff son). Due March 10. Call or check our website: [www.klsrcows.com](http://www.klsrcows.com) for video and updates. These will sell by live auction after the open heifers.









291 24th Ave NE  
Hurdsfield, ND 58451

[www.KLSRCOWS.com](http://www.KLSRCOWS.com)



*Selling 8 Sons of*  
**DCR Main**  
**Attraction!**