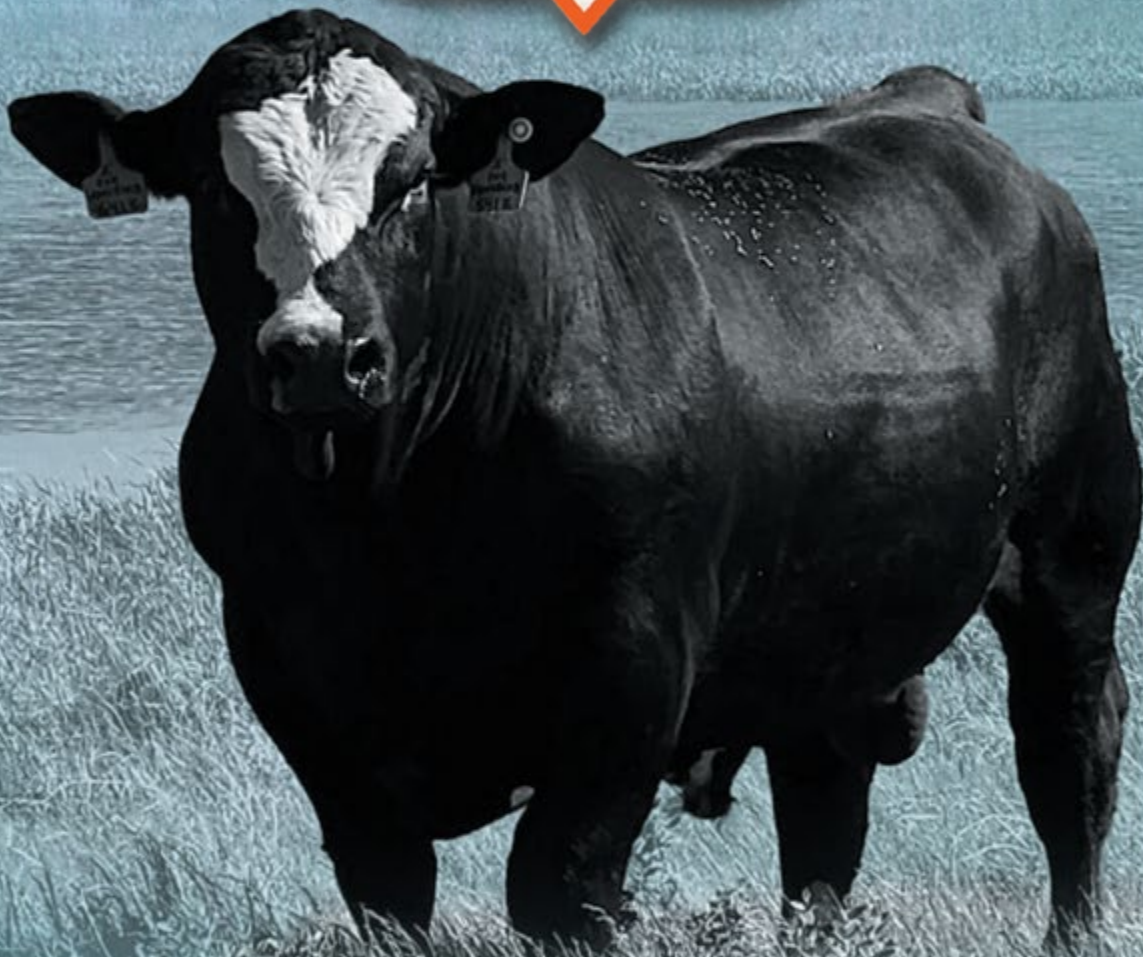


KLINE
SIMMENTAL RANCH
Hurdsfield, North Dakota



13th Annual Production Sale

FEB. 2, 2025

2 P.M. • AT THE RANCH • HURDSFIELD, ND

Selling:

58 Simmental and SimAngus™ Bulls
24 Registered Open Heifers
18 Black and Red Bred Heifers
12 Commercial Open Heifers

**Bred Heifers
Sell First**

Greetings, and welcome to our 13th annual production sale.

Greetings, and welcome to our 13th annual production sale. As I write this, we are going on multiple subzero days to start 2025 and all though the cold makes ranch life a little more difficult, winter 2024-2025 has been great in our area. It is a blessing to have full hay yards, some moisture in the frozen ground, mild temps, and very little snow to deal with so far. Pair that with the most optimism, possibly ever in the cattle industry and it is very difficult to complain, and we are sure blessed and thankful for the current time and times ahead.

2024 went by in what seemed like a flash. When I look back to when my kids were infants and toddler's I can't help but think of all the times I was told to enjoy it because it only gets busier and they grow up way to fast.... Jump forward to now..... those were 100% accurate words. Life is definitely busy and it is a blessing to be able to say that. I am happy to say that everyone is happy & healthy and doing well. Eddy(12) Emersyn (10) and Landri (8) are growing up way to fast and we are trying to cherish all that we can with them. Eddy is becoming more and more of an outdoorsman as he gets older. He experienced many firsts this year while duck and goose hunting, including a 332 bird day on a snow goose hunt with dad and friends, and capping his hunting season off with his first deer during rifle season. He is also becoming quite an asset around here as he raked hay solo quite a bit this summer, and answers dad's calls for help weather it be sorting cattle, dragging a new calf in the barn, or running the camera videoing bulls. Emersyn has found a passion for football as a player and a fan. He led his 3&4 grade team as the quarterback this season and he played very well. He is always working on his talent, always wanting to play catch no matter the location or weather and takes a football everywhere he goes. I have always wanted to coach my kids (not easy by the way) and coaching youth football has been an exciting and fun, new challenge to take on. Emersyn has a natural throwing talent that he continually practices. It was sure fun to throw in some passing offense in a league that is typically 99% running the ball. Landri seems to be growing and maturing at a considerably faster pace than her dad would like. She has a naturally happy and optimistic essence toward life no matter what she is doing. She finds joy in everything she does. It is not common for her to out-fish her older brothers or go home with biggest fish bragging rights, and she caught some dandy's this summer. She enjoyed her first season of softball. She loves the ranch and being around the cattle and her horse. The highlight, at least for me watching her, was her performance singing a duet and playing an angel with many speaking parts in the church Christmas concert. She has an amazing singing voice and her bravery to stand in front of a crowd and sing like she does impresses her very proud family in the audience. Mom and Dad are both doing great and me and the kids are extremely grateful for every thing they do for us. They are amazing parents and grandparents to their seven grandchildren.

The cattle offering, and depth of quality in the offering is the best we have ever had the opportunity to sell. We believe there is bull or heifer to fill everyone's needs. We have prided ourselves over the years



The Kline Family



on producing performance and growth, and the hardiness, fertility, and maternal strengths that sets Simmental cattle apart from other breeds. To achieve this, it all starts with the cow. A cow that can give birth to a vigorous calf that nurses quickly, takes care of that calf and raises it to a profitable weight at weaning time, and a calf that excels in every stage after. A cow that is both maternal and terminal. There is more tools and resources at our disposal now more than ever to help enhance the quality of our cattle. As useful and helpful as these tools are, around here we will not hang our hats solely on a set of epd's, a DNA test, or a new fad that is up and coming. We pride our selves on being a little bit unconventional with in the breed and believe that's one of the things that set our cattle apart. The further our breed trends to one specific trait or another I fear that we will be giving up to much of what sets this breed apart....True Performance. If we all raised them to be same this deal wouldn't work. At the end of the day, in my mind, Simmental cattle are the best complement to other breeds to fully utilize heterosis, or stand alone in a purebred setting for maternal, fertility, growth, carcass and docility. FULL CIRLCE PERFORMANCE if you want put a name to it. So, if you raise red or black, white, or baldy, we have the bull power to take your future calf crops and cow herd to the next level.

With that said, we would like to extend a huge THANK YOU to our customers and friends in this industry that have made our success possible. There is no greater reward to hear customer feed back and how our genetics are helping them advance their operations and achieving their genetic goals. Without your support we wouldn't be in business. What a time to be in the cattle business.... Wow!!! Here's to many more prosperous years to everyone in this great business. Thank you from the bottom of our hearts. Thank you for Attending or Watching our sale !!!

Sincerely, The Kline Family

Visitors welcome anytime!

Monty & Terri • Matt, Eddy, Emersyn & Landri Kline
Matt: (701) 693-6317 • Monty: (701) 693-6806

E-mail: klsrcows@gmail.com

www.KLsrcows.com • [f/Kline Simmental Ranch](https://www.facebook.com/KlineSimmentalRanch)

Contact us for a catalog, videos, DNA and other updates prior to sale day.



13th Annual Production Sale FEB. 2, 2025

2 P.M. • AT THE RANCH • HURDSFIELD, ND

Selling: **58 Simmental and SimAngus™ Bulls**

24 Registered Open Heifers

18 Black and Red Bred Heifers

12 Commercial Open Heifers

**Bred Heifers
Sell First**

KLSR Phone numbers

Matt Kline (701) 693-6317
Monty Kline (701) 693-6806

Auctioneer

Mike Ostrem, Rugby ND (701) 208-0164

Consultant

Ian Hall, Rafter H Ag Enterprises, LLC (701) 720-4966

Ringmen

Perry Thomas, American Simmental Assoc (701) 370-8336
Dustin Carter, Cattle Business Weekly (712) 898-9972

Livestock Insurance

Brett Schaefer, Heritage Insurance (701) 818-0806

We will do our best between the sale and delivery of the bulls to keep them healthy and safe. However we strongly suggest insuring your purchases in case of accidental injury or death.

Sale Terms & Conditions

Cattle will sell under the terms of the American Simmental Association. Please ask and terms will be provided. KLSR or anyone involved assume no legal risk or liability on sale day.

Sight Unseen Bidding: This year we will again have DV auction at the sale. We will also have sale staff available to bid over the phone like in years past. Please contact us or stop in to view the cattle prior to the sale.

Catalog design by • *Strommen Livestock Services*
Solen, ND • (701) 290-3886

Bull Health & Nutrition

Birth • Received Alpha CD, Inforce 3, Vitamin ADE

Turn out • Received Vista once SQ, Vision 7/somnus, injected with dectomax

September • Received Vista once SQ, vision 7/somnus, orally dewormed with synanthic

January • Received Virashield 6, poured with clean up 2
Bulls have been developed on a high roughage ration targeted for muscle growth, fertility and soundness. Ingredients include - Alfalfa, grass hay, silage, rolled corn, and a Blueprint seedstock protein and mineral supplement.

Open Heifers Health: Same as bull calves at birth and September **January** • Bangs vaccinates, first round of express FP 5 VL5 & poured with clean up II

Bred Heifers Health: 3 rounds modified live vaccines as calves. Bangs vaccinated, Express 5 fp VL5 prior to breeding **December 2024** • Virashield 6VL5 HB, vision 7/Somnus, oral deworm with synanthic & both guardian scour vaccinations

Care After the Sale and Delivery

All bulls will remain at KLSR after the sale to ensure their growth and development. We will start delivering in April after a breeding soundness exam and fertility test has been completed. We will deliver for free to ND, MN, MT, and SD. We will work with individuals of further distance to get your animals where they need to go. Heifers will need to be taken home or delivered ASAP after the sale. Please visit with us to make arrangements.

Hotel Accommodations

Cobblestone Inn & Sweets (701) 635-2222
410 W Brester, Harvey ND
McClusky Motor Motel..... (701) 636-2507
394 ND 200, McClusky ND

DVAuction
Broadcasting Real-Time Auctions

Can't make the sale? Let DVAuction bring the sale to you!
Busy during the sale? Let DVAuction represent your bid!

Visit www.DVAuction.com and Register Today

For General Questions Please Contact Our Office:
(402) 316-5460 or support @dvauction.com



M1 in Early September

M1

M1

KLSR GENESIS M1

BD	%SM	Color	P/S									
2024-02-15	PB SM	Homo Black	Homo Polled									
WS PROCLAMATION E202			Actual Data									
LBR GENESIS G69												
LBR DIANA D69												
KLSR GENESIS M1 (4423791)												
SPRINGCREEK LINER 56U												
SPRINGCREEK AMANDA 937E			BW	69								
SPRINGCREEK AMANDA 2A			BWR	ET								
			205	790								
			WWR	ET								
CE	BW	WW	YW	ADG	MCE	Milk	MWW	Stay	Marb	REA	API	TI
7.6	5.4	110.3	166.3	0.35	4.2	25.4	80.5	17.9	0.32	1.12	146.1	97.8

Standout herd sire prospect. His dam is our 937E donor we purchased out of Springcreek's dispersal. Her Walk the Line daughter is a standout and a future donor prospect in our bred heifer pen. 937E has flushed very well for us as we are expecting over 20 calves from her this coming calving season. M1 is darn good, he puts together the entire package along with an exceptional disposition. True herd bull here that I believe can add a lot of value and improve on some real-world performance and structural traits that may have been sacrificed by putting the paper ahead of the hooves on the ground. I don't expect his BW EPD to truly correlate how his progeny will calve as he is small headed and built right and transitions smoothly through his shoulders to his neck. Big time Herd sire that boasts many traits that makes Simmental a Simmental. Big wide top, thick butted, big scrotal, and very easy to get along with.



Springcreek Amanda 937E donor dam of M1 and M80



M8

M8

KLSR COOL DIRECTIVE M8

BD	%SM	Color	P/S									
2024-02-24	PB SM	Hetero Black	Homo Polled									
WS PROCLAMATION E202 MYY/SAS COOL DIRECTIVE J909 RUST MS CERTIN FLIRT 909G KLSR COOL DIRECTIVE M8 4423782 KLSR ENCORE H20 KLSR MISS ENCORE K1 KLSR MS MANITOBA H64			Actual Data									
			BW	68								
			BWR	80								
			205	786								
			WWR	99								
CE	BW	WW	YW	ADG	MCE	Milk	MWW	Stay	Marb	REA	API	TI
16.5	-0.2	89.3	131.7	0.26	7.9	26.6	71.2	13.1	0.25	0.6	144.6	90.7



M8 and Dam in September

Calving ease prospect out of a very nice first calf heifer. Encore daughters have all had exceptional udder quality. Encore is a proven heifer safe bull, M8 should be considered for use on virgin heifers or cows with confidence.



M11

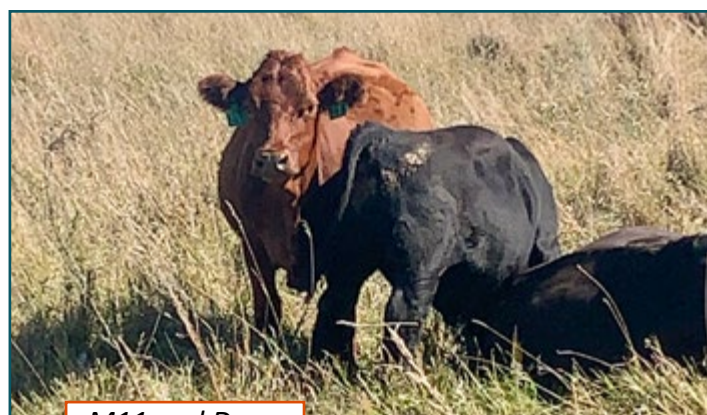
M11

KLSR COOL DIRECTIVE M11

BD	%SM	Color	P/S
2024-02-25	PB SM	Hetero Black	Hetero Polled
WS PROCLAMATION E202 MYV/SAS COOL DIRECTIVE J909 RUST MS CERTIN FLIRT 909G			
KLSR COOL DIRECTIVE M11 ⁴⁴²⁵⁶⁴⁷			Actual Data
WLB BLOOD RUNNER 3011C 461F			BW 81
KLSR MS BLOODRUNNER K38 D603			BWR 93
			205 787
			WWR 95

CE	BW	WW	YW	ADG	MCE	Milk	MWW	Stay	Marb	REA	API	TI
10.5	2.3	85.6	122.1	0.23	4.9	27.7	70.4	17.6	0.27	0.81	140.6	85.3

Stout made, moderate son of Cool Directive. His dam is a dark cherry red Bloodrunner daughter that has an excellent udder. The Bloodrunners have been very productive females, heavy milkers, stay dark red and are easy keepers.



M11 and Dam in September

M 14

KLSR ENGAGE M14

BD	%SM	Color	P/S
2024-02-27	PB SM	Hetero Black	Homo Polled
MRL SYSCO 14D CROSSROAD ENGAGE 125K CROSSROAD GINGLES 180G			
KLSR ENGAGE M14 ⁴⁴²⁷⁰⁶⁵			Actual Data
CCR COWBOY CUT 5048Z			BW 92
F875			BWR 103
KSR TRIUMPH 271Y			205 730
			WWR 91

CE	BW	WW	YW	ADG	MCE	Milk	MWW	Stay	Marb	REA	API	TI
7.5	4.2	90.6	135.4	0.28	3.5	23.6	68.8	15.8	0.05	0.85	121.2	80.4

Black Engage son that has had that herd bull look from a very young age. His dam is a very nice Cowboy Cut daughter that goes back to the great growth sire 680S. The Black calves sired by Engage are an impressive group all together.



M 14



M 18

M18

KLSR ENGAGE M18

BD	%SM	Color	P/S
2024-02-28	PB SM	Hetero Black	Homo Polled

MRL SYSCO 14D
CROSSROAD ENGAGE 125K
CROSSROAD GINGLES 180G
KLSR ENGAGE M18 4425801
CDI KING RED 216Y
KLSR MISS KING RED F918
DSR DREAM ROMANCE S869

Actual Data	
BW	95
BWR	106
205	789
WWR	99

CE	BW	WW	YW	ADG	MCE	Milk	MWW	Stay	Marb	REA	API	TI
7.9	3.8	87.7	128	0.25	4	26.1	69.8	15.4	0	0.91	117.5	78.3

Standout black engage son. Long sided and heavy muscled. He was easy to find all summer during pasture checks and hell be easy to find on sale day as well. He will the extra length that generates pounds



M18 and Dam in June

M24

KLSR COOL DIRECTIVE M24

BD	%SM	Color	P/S
2024-03-01	PB SM	Non dilutor	Homo Polled

WS PROCLAMATION E202
MYY/SAS COOL DIRECTIVE J909
RUST MS CERTIN FLIRT 909G
KLSR COOL DIRECTIVE M24 4423770
WS EPIC E152
KLSR MS EPIC K3
KLSR MS BLOOD RUNNER

Actual Data	
BW	73
BWR	85
205	699
WWR	88

CE	BW	WW	YW	ADG	MCE	Milk	MWW	Stay	Marb	REA	API	TI
14.1	-0.6	82.9	120.8	0.24	6.9	23.3	64.6	13.8	0.29	0.76	143.4	87.8

We Used Cool directive on a few red Heifers to try and get an outcross red calving ease bull. This is the only red one we got. He should be a strong calving ease candidate for virgin heifers. His dam is a clean fronted, easy going young cow with a great udder



M24



M25

M25

KLSR ENGAGE M25

BD	%SM	Color	P/S
2024-03-01	1/2 SM 1/2 CS	Hetero Black	Homo Polled

MRL SYSCO 14D
CROSSROAD ENGAGE 125K
CROSSROAD GINGLES 180G
KLSR ENGAGE M25 (4423797)
219P

Actual Data	
BW	94
BWR	104
205	842
WWR	106

CE	BW	WW	YW	ADG	MCE	Milk	MWW	Stay	Marb	REA	API	TI

Possibly the largest framed bull in the pen with all kinds of length, muscle, and thickness. Engage sired an outstanding set of black calves and this guy has been a top performer since he was young. His dam is a very productive commercial cow that raises the good ones. All bull calves are left bulls till weaning so we can assess every calf no matter the cow. This cow gets it done, just no paper trail.



M26

M26

KLSR COOL DIRECTIVE M26

BD	%SM	Color	P/S
2024-03-01	PB SM	Hetero Black	Homo Polled

WS PROCLAMATION E202
MY/SAS COOL DIRECTIVE J909
RUST MS CERTIN FLIRT 909G
KLSR COOL DIRECTIVE M26 4423771
CROSSROAD STRIDE H149
KLSR MISS STRIDE K132
KLSR MISS SHERIFF E718

Actual Data	
BW	74
BWR	87
205	710
WWR	89

CE	BW	WW	YW	ADG	MCE	Milk	MWW	Stay	Marb	REA	API	TI
12.1	1	80.9	120.2	0.25	5.8	26.3	66.7	15.4	0.21	0.78	135.8	82.7

Another Calving ease prospect sired by Cool directive and out of a productive cow family. His grandam is E718 who has done a great job for us and has put another top weaning heifer in the replacement pen. Calving ease, with a stylish look and strong maternal traits.

DVAuction

Broadcasting Real-Time Auctions

Never Miss An Auction Again!
Watch & Bid online for FREE!

**Visit www.DVAuction.com
and Register Today!**

For General Questions Please Contact Our Office:
(402) 316-5460 or support@dvauction.com



M31

M31

KLSR ENGAGE M32

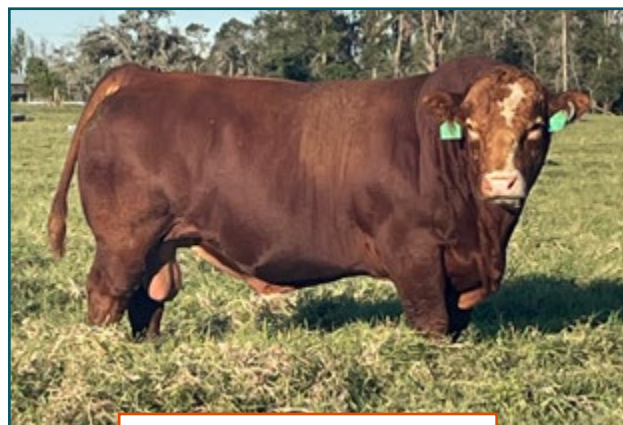
BD	%SM	Color	P/S
2024-03-04	PB SM	Non dilutor	Homo Polled

MRL SYSCO 14D
CROSSROAD ENGAGE 125K
CROSSROAD GINGLES 180G
KLSR ENGAGE M32 4423787
F828 KUNTZ SHERIFF 8A
D665

Actual Data	
BW	92
BWR	100
205	811
WWR	102

CE	BW	WW	YW	ADG	MCE	Milk	MWW	Stay	Marb	REA	API	TI
7.7	2.8	88.5	126.4	0.24	2.2	26.9	71	15.7	-0.19	1.04	109.3	75.5

A definite sale highlight in the red division. Red baldy Engage son that hales from our F828 herd matron. F828 has put several bulls through our sale including KLSR River Face K74, our high selling bull in our 2023 sale, who also sires M85 and M78 in the sale as well. M31 is an exceptional calf and his dam is a no miss, easy keeping, mild mannered cow.



KLSR River Face K74
Maternal brother to M31

M34

KLSR GENESIS M34

BD	%SM	Color	P/S
2024-03-04	PB SM	Homo Black	Homo Polled

WS PROCLAMATION E202
LBRS GENESIS G69
LBR DIANA D69
KLSR GENESIS M34 4423772
WLB MANITOBA 52Z 435B
KLSR MS MANITOBA J90
KLSR SUPER POWER Y22

Actual Data	
BW	89
BWR	100
205	724
WWR	91

CE	BW	WW	YW	ADG	MCE	Milk	MWW	Stay	Marb	REA	API	TI
7.1	3.3	92.5	134.8	0.26	3	19.5	65.7	13.9	0.39	0.95	136.8	90

Stout made genesis son in a very moderate sized package. Dam is a good cow, but smaller in size. He will definitely moderate some larger framed harder keeping cows with sacrificing stoutness and muscle





M35

M35

KLSR ENGAGE M35

BD	%SM	Color	P/S
2024-03-04	PB SM	Non dilutor	Homo Polled

MRL SYSCO 14D
CROSSROAD ENGAGE 125K
CROSSROAD GINGLES 180G
KLSR ENGAGE M35 4423781
KUNTZ SHERIFF 8A
KLSR MS SHERIFF
ELLINGSON WALBANGR C5033

Actual Data	
BW	94
BWR	102
205	870
WWR	110

CE	BW	WW	YW	ADG	MCE	Milk	MWW	Stay	Marb	REA	API	TI
10.9	3.4	92.9	139.4	0.29	4.5	30.3	76.6	15.2	-0.23	0.78	112.4	77.7

Red standout Engage son that has looked tremendous since birth. He was the calf that always commanded attention in the pasture throughout the summer. His dam is a very productive Sheriff daughter who has been a great cow for us. Her heifer calf from last year is one of the top bred heifers in the pen. M35 is a total package herd bull. Powerful, dark cherry red, length, muscle, and has had great scrotal development from an early age and was in the top of the group at weaning when he walked on the scale. A bull that we would definitely consider collecting for in herd AI use.



M37

M37

KLSR ENGAGE M37

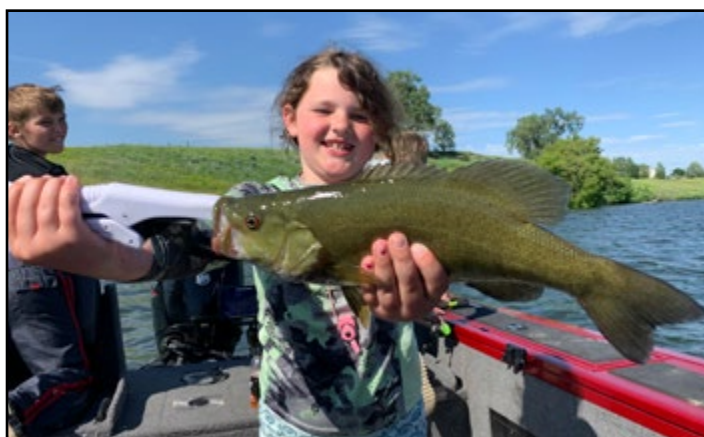
BD	%SM	Color	P/S
2024-03-04	PB SM	Non dilutor	Homo Polled

MRL SYSCO 14D
CROSSROAD ENGAGE 125K
CROSSROAD GINGLES 180G
KLSR ENGAGE M37 4423759
IPU ROYAL FLUSH 4C
KLSR MISS FLUSH E836
KLSR HAZEL Z46

Actual Data	
BW	96
BWR	104
205	745
WWR	94

CE	BW	WW	YW	ADG	MCE	Milk	MWW	Stay	Marb	REA	API	TI
6.2	4.7	86.4	127	0.25	2.4	26.5	69.6	16.3	-0.09	0.86	110.5	74

Powerful, long made dark red son of Engage, his dam has done a great job for us. Every bull calf she has raised have sold well for us, and her two daughters have both been retained. Her Convoy bred heifer is a standout that would be worth a seeing if you come to look ahead of the sale.





M40

M40

KLSR GENESIS M40

BD	%SM	Color	P/S
2024-03-05	PB SM	Homo Black	Homo Polled

WS PROCLAMATION E202
LBRS GENESIS G69
LBR DIANA D69
KLSR GENESIS M40 4423758
WLB MANITOBA 52Z 435B
KLSR MS MANITOBA H61
D684

Actual Data	
BW	94
BWR	103
205	733
WWR	92

CE	BW	WW	YW	ADG	MCE	Milk	MWW	Stay	Marb	REA	API	TI
6.8	4.1	93.6	137.8	0.28	2.5	21.4	68.1	13.9	0.39	0.95	135.9	90

This calf is about as stout as you could make one and his dam is built the same way. She is a tank that maintains her condition very well. Very easy keeping, easy fleshing, low input cow family



M47

M47

KLSR CONVOY M47

BD	%SM	Color	P/S
2024-03-06	1/2 SM 1/2 CS	Hetero Black	Homo Polled

MADER WALK THIS WAY 224B
SUNNY VALLEY CONVOY 24J
SUNNY VALLEY DESIRE 1E
KLSR CONVOY M47 (4423799)
719P

Actual Data	
BW	85
BWR	
205	732
WWR	

CE	BW	WW	YW	ADG	MCE	Milk	MWW	Stay	Marb	REA	API	TI

Stout, wide based, with a stylish presence to him. Convoy has been an exceptional breeding piece for us. He sires docility, fertility, length and muscle. His first daughters will calve shortly after the sale and they are a very consistent group and are the largest sire group of bred heifers.



M45

M45

KLSR ENGAGE M45

BD	%SM	Color	P/S
2024-03-05	PB SM	Non dilutor	Homo Polled

MRL SYSCO 14D
CROSSROAD ENGAGE 125K
CROSSROAD GINGLES 180G
KLSR ENGAGE M45 4423750
SPRINGCREEK LADIES MAN 90E
SPRINGCREEK ANGEL 67H
SILVER LAKE COBRA 100D

Actual Data	
BW	96
BWR	106
205	817
WWR	103

CE	BW	WW	YW	ADG	MCE	Milk	MWW	Stay	Marb	REA	API	TI
7.1	4.1	83.8	123.8	0.25	3.9	33.6	75.4	16.9	-0.1	0.94	112.5	74

This is a very maternally bred bull. If you retain heifers this guy should make some very productive daughters. His dam was purchased from the Spring Creek dispersal and her Walk The Line daughter has a strong argument for the top bred heifer in a very strong group of first calvers. His dam is strong milker that feeds her calves well.



M51

M51

KLSR JOHN WAYNE M51

BD	%SM	Color	P/S
2024-03-06	5/8 SM 1/4 AN 1/8 CS	Hetero Black	Homo Polled

SFM STOUGHTON 18D
WLB JOHN WAYNE 493G
WLB 52Z TARA 3612D
KLSR JOHN WAYNE M51 4423766
S A V HARVESTOR 0338
KLSR MS HARVESTER B16
X27

Actual Data	
BW	94
BWR	101
205	722
WWR	91

CE	BW	WW	YW	ADG	MCE	Milk	MWW	Stay	Marb	REA	API	TI
7.6	3.7	81.2	126.8	0.28	3.1	20.9	61.6	16.9	0.08	0.62	110.7	71.1

The only John Wayne calf in the sale. He is super thick and heavy muscled. This is a unique pedigree combining SAV Harvester and WLB John Wayne. Big time performance backed by a cow that's been productive around here for a while.



M52

KLSR SPECIAL OPS M52

BD	%SM	Color	P/S
2024-03-06	3/4 SM 1/4 CS	Homo Black	Homo Polled
HART ASSULT 059G			
QB SPECIAL OPS K11			
QB MS G906			
KLSR SPECIAL OPS M52 4423783			
TNT TANKER U263			
KLSR MISS TANKER B13			
KLSR U801			

Actual Data	
BW	101
BWR	109
205	770
WWR	97

CE	BW	WW	YW	ADG	MCE	Milk	MWW	Stay	Marb	REA	API	TI
5.2	5.1	98.2	156.5	0.36	4.2	28.3	77.4	18.4	-0.03	1.11	122.4	82.6

We are fortunate to have been able to get in early on the use of Special Ops. His calves have not disappointed. They have a unique style and presence about them along with Thickness, depth and a classy smooth looking front end. M52 is backed by a foundation cow family, going back to U801. She is one that helped start our program and has her influence throughout our herd. His dam is a massive Tanker daughter that has done well for us.

Full Brothers



M53

KLSR CONVOY M53

BD	%SM	Color	P/S
2024-03-07	PB SM	Hetero Black	Homo Polled
MADER WALK THIS WAY 224B			
SUNNY VALLEY CONVOY 24J			
SUNNY VALLEY DESIRE 1E			
KLSR CONVOY M53 (4423795)			
LFE MCDAVID 413C			
SPRINGCREEK LENA 11F			
SPRINGCREEK LENA 900A			

Actual Data	
BW	94
BWR	ET
205	790
WWR	ET

CE	BW	WW	YW	ADG	MCE	Milk	MWW	Stay	Marb	REA	API	TI
6.7	4.4	93.9	144.3	0.32	5.2	26.3	73.2	15.4	-0.05	0.96	116	80.3

ET calf from Springcreek Lena 11F and Convo. M53 and M54 are ET brothers. 11F is an awesome cow to be around, massive bodied, long, easy keeping, and a very calm demeanor. Her Springcreek Estate son that was a sale feature in last years sale to Amber Ledahl Of Zahl ND. Her mating to Convo was everything we were hoping for as these flush brothers are going to be big time herd bulls.



M54

KLSR CONVOY M54

BD	%SM	Color	P/S
2024-03-07	PB SM	Hetero Black	Homo Polled
MADER WALK THIS WAY 224B			
SUNNY VALLEY CONVOY 24J			
SUNNY VALLEY DESIRE 1E			
KLSR CONVOY M54 (4423789)			
LFE MCDAVID 413C			
SPRINGCREEK LENA 11F			
SPRINGCREEK LENA 900A			

Actual Data	
BW	100
BWR	ET
205	871
WWR	ET

CE	BW	WW	YW	ADG	MCE	Milk	MWW	Stay	Marb	REA	API	TI
6.4	4.6	101.9	154.5	0.33	5	26.3	77.2	16.2	0.24	0.98	135.5	91.9

The Man among boys of the pen. He has been a standout since day one and is just flat out good. For as much muscle and thickness that he possesses he can still get out and travel smooth and free. Exceptional disposition, long, powerful and exceptional scrotal development. Big time herd bull here



M56

KLSR SPECIAL OPS M56

BD	%SM	Color	P/S
2024-03-07	3/4 SM 5/32 AN 3/32 CS	Hetero Black	Homo Polled

HART ASSULT 059G
 QB SPECIAL OPS K11
 QB MS G906
KLSR SPECIAL OPS M56 4423767
 KLSR SPEED DEMON E708
 KLSR MS DEMON J70
 KLSR WHISKEY GIRL G975

Actual Data	
BW	94
BWR	105
205	741
WWR	93

CE	BW	WW	YW	ADG	MCE	Milk	MWW	Stay	Marb	REA	API	TI
7.5	3.8	92.5	145.2	0.33	4.6	25.8	72.3	16	0.27	0.82	123.8	83.1

A Favorite in the Special Ops sire group. His dam is a really good young cow. He has U801 as his granddam. Speed Demon daughters have near perfect udders. A real good herd bull in the making here



M60

KLSR GENESIS M60

BD	%SM	Color	P/S
2024-03-08	3/4 SM 1/8 AN 1/8 CS	Homo Black	Homo Polled

WS PROCLAMATION E202
 LBR GENESIS G69
 LBR DIANA D69
KLSR GENESIS M60 4423785
 TNT TANKER U263
 KLSR MISS TANKER B24
 KLSR MISS 878 X16

Actual Data	
BW	73
BWR	TWIN
205	768
WWR	

CE	BW	WW	YW	ADG	MCE	Milk	MWW	Stay	Marb	REA	API	TI
9	2.6	97.9	145.4	0.3	5.2	26.1	75	15.8	0.48	0.85	139.5	92.6

Well here is the black blaze face standout of the offering. Very Attractive made calf, with a ton of rib shape and thickness. Genesis x Tanker is a pedigree that is exciting on paper and he's darn good in the flesh as well. His dam is a big bodied cow that has a great production history posting a 107 WWR on her calves.





M61

KLSR SPECIAL OPS M61

BD	%SM	Color	P/S	
2024-03-08	PB SM	Hetero Black	Homo Polled	
HART ASSULT 059G			Actual Data	
QB SPECIAL OPS K11				
QB MS G906				
KLSR SPECIAL OPS M61 4423780				
CDI KING RED 216Y			BW	95
KLSR MS KING RED			BWR	102
C568			205	737
			WWR	93

CE	BW	WW	YW	ADG	MCE	Milk	MWW	Stay	Marb	REA	API	TI
6.9	3.6	88.4	135.3	0.29	3.7	26.9	71.2	18.8	0.23	0.92	136.6	84.3

Standout Special Ops Calf. Very productive no miss cow as his dam. The Special Ops sire group will be a favorite on sale day.



M61 and Dam
in June

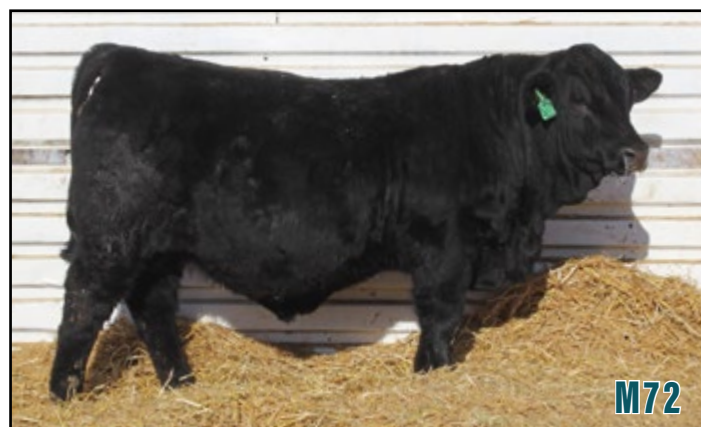
M69

KLSR SPECIAL OPS M69

BD	%SM	Color	P/S	
2024-03-10	3/4 SM 1/4 CS	Homo Black	Homo Polled	
HART ASSULT 059G			Actual Data	
QB SPECIAL OPS K11				
QB MS G906				
KLSR SPECIAL OPS M69 4423779				
KS POWER PLAY B661			BW	94
KLSR MS POWER PLAY			BWR	101
B18			205	755
			WWR	95

CE	BW	WW	YW	ADG	MCE	Milk	MWW	Stay	Marb	REA	API	TI
6.7	4	88.4	132.9	0.28	3.4	25.1	69.3	15.3	0.11	0.81	121.8	80.5

Similar made calf as M61. These two would make a great pair to own together. Long powerful, functional, herd bulls



M72

KLSR ENGAGE M72

BD	%SM	Color	P/S	
2024-03-10	PB SM	Hetero Black		
MRL SYSCO 14D			Actual Data	
CROSSROAD ENGAGE 125K				
CROSSROAD GINGLES 180G				
KLSR ENGAGE M72	4457133		BW	95
TNT UNION D385			BWR	99
KLSR MS UNION G966			205	864
KLSR MISS RIDDLER E725			WWR	103

CE	BW	WW	YW	ADG	MCE	Milk	MWW	Stay	Marb	REA	API	TI
7.2	4.7	101.7	152.4	0.32	3.4	26.7	77.5	13.4	-0.02	0.89	115.9	85.1

The boss of the black Engage sons. Pretty cool calf here. His dam is a long, impressive looking cow, big time performance pedigree and Epd's. She was a high seller through our sale as an open heifer and is owned together with Reimche Land and Cattle. M72 has had that "look" and always attracted attention in the pasture.



M72 and Dam
in September



M75

M75

KLSR CONVOY M75

BD	%SM	Color	P/S									
2024-03-10	PB SM	Hetero Black	Homo Polled									
MADER WALK THIS WAY 224B			Actual Data									
SUNNY VALLEY CONVOY 24J												
SUNNY VALLEY DESIRE 1E			BW	93								
KLSR CONVOY M75 4423754			BWR	102								
DCR MR POWER UP E68			205	810								
KLSR MS POWER UP G997			WWR	102								
KLSR MS SHERIFF												
CE	BW	WW	YW	ADG	MCE	Milk	MWW	Stay	Marb	REA	API	TI
8	4.1	96.2	149.7	0.33	6.2	28.1	76.1	16.9	-0.1	1.08	119.7	81.4

One of the top Convey sons in the sale. He has had that long, big bodied, rugged look to him from an early age. Cow family is exceptional. Granddam is E715 who is the dam of M35 in the sale also. G997's first calf was KLSR Locked In J14 who was the High selling Red bull in 2022. Great cows Stacked up in this pedigree.



KLSR J14
Maternal
Brother to M75



M77

M77

KLSR STRIDE M77

BD	%SM	Color	P/S									
2024-03-11	PB SM	Non dilutor	Homo Polled									
<div>WFL WESTCOTT 24C</div> <div>CROSSROAD STRIDE H149</div> <div>CROSSROAD URSULA 791U</div> <div>KLSR STRIDE M77 4423778</div> <div>KUNTZ SHERIFF 8A</div> <div>KLSR GENEVIVE G917</div> <div>KLSR MISS FLUSH E818</div>			Actual Data									
			BW	92								
			BWR	100								
			205	713								
			WWR	90								
CE	BW	WW	YW	ADG	MCE	Milk	MWW	Stay	Marb	REA	API	TI
7.7	3	77.7	118.3	0.25	2.7	25.6	64.4	15.9	-0.11	0.96	110.8	70.8

Very maternal bred calf here. Stylish profile, sound structured, and very mild mannered. 3 full brothers to this guy have sold respectfully in our last 3 sales. Definitely a bull to retain females from and expect them to be top cows with exceptional udder quality and maternal strengths.



KLSR River Face K74
Sire to M78 & M85

M78

KLSR RIVERFACE M78

BD	%SM	Color	P/S
2024-03-11	PB SM	Hetero Black	Homo Polled

CROSSROAD STRIDE H149
KLSR RIVER FACE K74
F828
KLSR RIVERFACE M78
LFE THE RIDDLER 323B
KLSR MISS RIDDLER E725
KS TRIUMPH419A

Actual Data	
BW	97
BWR	104
205	792
WWR	100

CE	BW	WW	YW	ADG	MCE	Milk	MWW	Stay	Marb	REA	API	TI
7.7	3.6	88.9	135.6	0.29	4.9	23.1	67.4	15.2	-0.05	0.96	115.6	77.3

We have two River Face Sons in this year's sale M78 & M85. River Face Was our high seller in our 2023 sale and I wish we would have Al'd more to him. The heifer calves from him look exceptional. As for M78, he will add length, depth and Muscle. His Dam is a massive long bodied cow that was purchased through the ND State Simmental Classic sale by Steichen Farms and we have since Bought her back.



M79

KLSR GENESIS M79

BD	%SM	Color	P/S
2024-03-12	PB SM	Hetero Black	Homo Polled

WS PROCLAMATION E202
LBRS GENESIS G69
LBR DIANA D69
KLSR GENESIS M79 4423764
QB BLUEPRINT D47
KLSR MS BLUEPRINT G938
DSR MIDNIGHT TRACK T500

Actual Data	
BW	98
BWR	106
205	898
WWR	113

CE	BW	WW	YW	ADG	MCE	Milk	MWW	Stay	Marb	REA	API	TI
6.1	4	105.5	154.7	0.31	2.3	22.3	75	15.3	0.43	1.21	144.6	98.2

Big time horse power genesis calf here. Long bodied, big top and hip. Larger framed than most genesis calves. he's been a stud since birth and was one of the heavy weights at weaning time with a 113 WWR. His dam is a thick powerful Blue Print daughter that's has done great for us so far in her young career.



M79 and Dam
in June



M80

KLSR GENESIS M80

BD	%SM	Color	P/S
2024-03-12	PB SM	Hetero Black	Homo Polled
WS PROCLAMATION E202			
LBR GENESIS G69			
LBR DIANA D69			
KLSR GENESIS M80 (4423793)			
SPRINGCREEK LINER 56U			
SPRINGCREEK AMANDA 937E			
SPRINGCREEK AMANDA 2A			

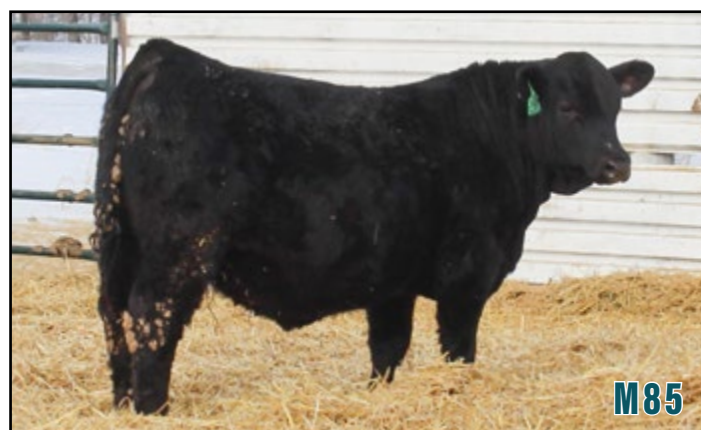
Actual Data	
BW	94
BWR	ET
205	767
WWR	ET

CE	BW	WW	YW	ADG	MCE	Milk	MWW	Stay	Marb	REA	API	TI
9.2	1.7	88.5	128.3	0.25	5.3	25.4	69.6	19.8	0.39	0.86	152.4	90.4

Full ET brother to M1 in the sale. Excellent donor dam in 937E. She has been a great addition to our herd and looking forward to 20 plus calves from her in 2025. Expect an increase in fertility, muscle, and disposition.



Springcreek Amanda 937E
donor dam of M1 and M80



M85

KLSR RIVERFACE M85

BD	%SM	Color	P/S
2024-03-14	PB SM	Hetero Black	Hetero Polled
CROSSROAD STRIDE H149			
KLSR RIVER FACE K74			
F828			
KLSR RIVERFACE M85 4423765			
WLB MANITOBA 52Z 435B			
KLSR MISS MANITOBA E827			
KS MISS ABERDEEN A8349			

Actual Data	
BW	93
BWR	100
205	754
WWR	95

CE	BW	WW	YW	ADG	MCE	Milk	MWW	Stay	Marb	REA	API	TI
7.4	3.6	84	125.7	0.26	3.4	21.5	63.4	15.4	-0.08	0.97	111.7	73.7

The Second River face calf in the sale. Deep bodied, stout, with lots of style and eye appeal. Dam is a good Manitoba daughter with a nice udder. She raised a good Springcreek Tesla son that sold well in our 2023 sale.



M87

KLSR ENGAGE M87

BD	%SM	Color	P/S
2024-03-15	PB SM	Hetero Black	Homo Polled
MRL SYSCO 14D			
CROSSROAD ENGAGE 125K			
CROSSROAD GINGLES 180G			
KLSR ENGAGE M87 4423786			
LFE THE RIDDLER 323B			
F843			
Z30			

Actual Data	
BW	96
BWR	103
205	783
WWR	99

CE	BW	WW	YW	ADG	MCE	Milk	MWW	Stay	Marb	REA	API	TI
7	4.7	95	144.6	0.31	3.8	25.4	72.9	15.9	-0.01	0.87	118.6	81.1

Another Black Engage calf. Engage really sired an excellent group of black calves. The consistency and quality is there with any one of them. M87 is stout and stylish. Dam is big bodied Riddler daughter that has a nice udder. His Granddam, Z30 was a very good cow and adds HA Image Maker to the pedigree which makes this fella more intriguing. Strong maternal traits in this guy.



KLSR River Face K74
Sire to M78 & M85



M89

KLSR SPECIAL OPS M89

BD	%SM	Color	P/S									
2024-03-15	PB SM	Hetero Black	Homo Polled									
<div>HART ASSULT 059G</div> <div>QB SPECIAL OPS K11</div> <div>QB MS G906</div> <div>KLSR SPECIAL OPS M89 4423784</div> <div>QB BLUEPRINT D47</div> <div>KLSR MS BLUEPRINT G974</div> <div>KLSR MISS TANKER B13</div>			Actual Data									
			BW	95								
			BWR	103								
			205	827								
			WWR	104								
CE	BW	WW	YW	ADG	MCE	Milk	MWW	Stay	Marb	REA	API	TI
5.5	5.1	102.6	163	0.38	4.2	24.6	75.9	15.9	0.11	1.15	127.4	88.5

This guy is a powerhouse Special Ops calf combining TNT Tanker and QB Blueprint on the bottom side of the pedigree. This fella is pretty cool, he has a ton of rib shape and depth and a big hip and wide top while expressing the length we like to see. His dam is a very good Blueprint daughter that goes back to B13 (M52's Dam) and U801 who was a foundation female that had a huge influence in our program over the years.



M90

KLSR CONVOY M90

BD	%SM	Color	P/S									
2024-03-15	PB SM	Hetero Black	Hetero Polled									
MADER WALK THIS WAY 224B			Actual Data									
SUNNY VALLEY CONVOY 24J												
SUNNY VALLEY DESIRE 1E			BW	87								
KLSR CONVOY M90 4423773			BWR	97								
SPRINGCREEK IRONSIDES 53G			205	803								
KLSR MS IRONSIDES J41			WWR	101								
BCLR MISS STUBBY A379												
CE	BW	WW	YW	ADG	MCE	Milk	MWW	Stay	Marb	REA	API	TI
7.4	4.2	95	146.2	0.32	6.5	21.9	69.3	16.5	-0.08	1.06	118.2	80.2

Real stout convoy son that is a little more moderate than the majority of the convoy progeny. His dam is a real nice young Ironsides Daughter and His Grandam, A379 was purchased from Bichler Simmentals.



M92

KLSR ENGAGE M92

BD	%SM	Color	P/S
2024-03-16	PB SM	Non dilutor	Homo Polled
MRL SYSCO 14D CROSSROAD ENGAGE 125K CROSSROAD GINGLES 180G			
KLSR ENGAGE M92 4425799			
IR IMPERIAL D948			
KLSR MISS IMPERIAL F810			
			Actual Data
			BW 88
			BWR 99
			205 792
			WWR 100

CE	BW	WW	YW	ADG	MCE	Milk	MWW	Stay	Marb	REA	API	TI
9.8	2.1	83.7	124	0.25	5.2	24.7	66.5	14.4	0.13	0.97	127.4	81.7

Dark red Engage son that offers a little more calving ease. He is long bodied, small headed, and is built with the look of a potential calving ease bull. His dam is a typical Imperial daughter, Moderate, easy fleshing, and a picture-perfect udder.

Crossroad Engage 125K • Sire of Lot M92



M93

KLSR STRIDE M93

BD	%SM	Color	P/S
2024-03-16	PB SM	Non dilutor	Homo Polled
WFL WESTCOTT 24C CROSSROAD STRIDE H149 CROSSROAD URSULA 791U			
KLSR STRIDE M93 4423761			
WLB BLOOD RUNNER 3011C 461F			
KLSR MS BLOOD RUNNER			
KLSR MISS FLUSH E750			
			Actual Data
			BW 95
			BWR 105
			205 835
			WWR 105

CE	BW	WW	YW	ADG	MCE	Milk	MWW	Stay	Marb	REA	API	TI
4.2	5.3	91.9	136.3	0.28	0.7	24.2	70.1	17.1	-0.1	1.09	110.3	75.9

This guy is a powerhouse stride son. His young Bloodrunner dam is earning herself donor cow considerations. Her first calf was retained into the herd and is the dam of the M24 calf in the sale. Last year she raised a stout Convoy son that was a sale feature in the black division selling to Cody Gentzkow. M93 has a huge hip and hind quarter, mild mannered just like his mom, and expresses very good scrotal development. He'll be easy to find at the top of the red division.

M102

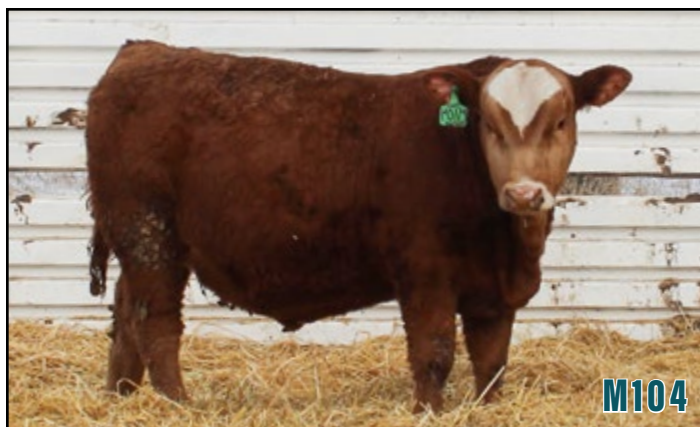
KLSR ENGAGE M102

BD	%SM	Color	P/S
2024-03-18	3/4 SM 1/4 CS	Non dilutor	Hetero Polled
MRL SYSCO 14D CROSSROAD ENGAGE 125K CROSSROAD GINGLES 180G			
KLSR ENGAGE M102 4423752			
IPU ROYAL FLUSH 4C			
KLSR MS FLUSH H57			
X1			
			Actual Data
			BW 90
			BWR 100
			205 760
			WWR 96

CE	BW	WW	YW	ADG	MCE	Milk	MWW	Stay	Marb	REA	API	TI
7.8	3.2	83.2	124.5	0.26	3.5	24.9	66.4	16.1	-0.11	0.98	113	73.7

Maternally bred Engage son. Long bodied, stylish calf with a good cow family behind him. His dam is a big bodied, easy keeping cow.





M104 KLSR STRIDE M104

BD	%SM	Color	P/S
2024-03-20	PB SM	Non dilutor	Homo Polled
WFL WESTCOTT 24C CROSSROAD STRIDE H149 CROSSROAD URSULA 791U			
KLSR STRIDE M104 ⁴⁴²⁵⁶⁴⁹ KS VANDERBILT G220 BGL MISS VANDERBILT J166B BGL ZALARA Z158B			
			Actual Data
			BW 98
			BWR 107
			205 792
			WWR 96

CE	BW	WW	YW	ADG	MCE	Milk	MWW	Stay	Marb	REA	API	TI
3	5.2	94.8	145.2	0.31	0.5	24.3	71.6	14	0.05	0.94	112.5	81.1

Red blaze faced stride calf that is long, thick and heavy muscled. His dam is a broody, powerful, easy going KS Vanderbilt daughter that we bought from Bryan Leapaltdt through Kenner's sale.



M107 KLSR STRIDE M107

BD	%SM	Color	P/S
2024-03-24	PB SM	Non dilutor	Homo Polled
WFL WESTCOTT 24C CROSSROAD STRIDE H149 CROSSROAD URSULA 791U			
KLSR STRIDE M107 ⁴⁴⁵⁷¹³⁰ KUNTZ SHERIFF 8A KLSR SHERIFF G925 KLSR MISS FLUSH E749			
			Actual Data
			BW 95
			BWR 101
			205 813
			WWR 97

CE	BW	WW	YW	ADG	MCE	Milk	MWW	Stay	Marb	REA	API	TI
7.2	3.6	85.9	128.6	0.27	3.1	25.2	68.1	15.6	-0.14	0.99	109.7	74

Heavy muscled long bodied stride son with a perfect blaze face. Should sire length and muscle and the kind of daughters you will want to keep. The Sheriff females have been great producers, if you go through the red bulls in the sale you will find Sheriff females have raised some of the top calves and they do it every year.

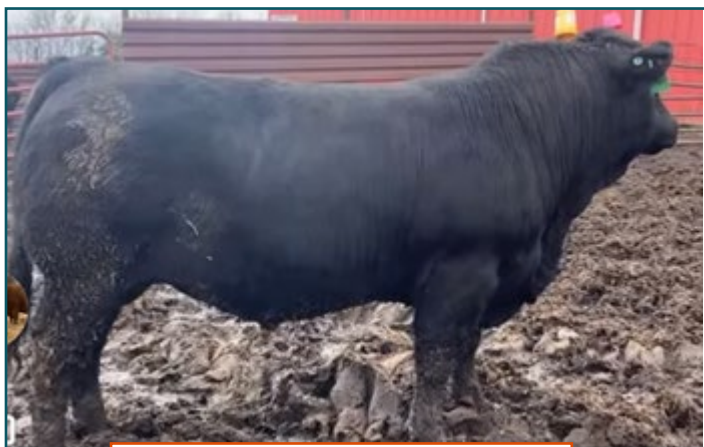


M114 KLSR ENGAGE M114

BD	%SM	Color	P/S
2024-03-23	PB SM	Non dilutor	Homo Polled
MRL SYSCO 14D CROSSROAD ENGAGE 125K CROSSROAD GINGLES 180G			
KLSR ENGAGE M114 ⁴⁴²³⁷⁶² SRF ZOOM 938G DKSR MS ZOOM J405 DKSR MS ROOSTER G247			
			Actual Data
			BW 85
			BWR 95
			205 805
			WWR 101

CE	BW	WW	YW	ADG	MCE	Milk	MWW	Stay	Marb	REA	API	TI
9.7	1.8	82.3	119.8	0.23	4	32.3	73.4	15.4	0.05	0.92	124.2	79.6

Stylish, stout made Engage calf with performance and calving ease bred in. His Dam was our pick from Kunkel's 2023 sale and she has done great with her first two calves. Her first calf sold to Jesse Nelson in last years sale.



Sunny Valley Convoy 24J as a yearling Sire of M119

M119

KLSR CONVOY M119

BD	%SM	Color	P/S
2024-03-24	5/8 SM 3/8 AN	Homo Black	Homo Polled
MADER WALK THIS WAY 224B SUNNY VALLEY CONVOY 24J SUNNY VALLEY DESIRE 1E			
KLSR CONVOY M119 4423751			
S A V TEN SPEED 3022			
KLSR MISS TEN SPEED E703			
KLSR MISS GRIZ C525			
			Actual Data
			BW 94
			BWR 100
			205 809
			WWR 102

CE	BW	WW	YW	ADG	MCE	Milk	MWW	Stay	Marb	REA	API	TI
8.8	2.7	89.7	140.2	0.32	5.6	27.3	72.5	14.1	0.19	0.82	118.5	81.3

A very good 5/8 Sim Angus. He has been a chunky made calf from a young age. His dam, E703, is a massive easy keeper, heavy milker, and also the dam to KLSR Battalion G902 who has been a great herd bull for Dalton and Kristen Steichen.



M125

KLSR ENGAGE M75

BD	%SM	Color	P/S
2024-03-26	PB SM	Non dilutor	Hetero Polled
MRL SYSCO 14D CROSSROAD ENGAGE 125K CROSSROAD GINGLES 180G			
KLSR ENGAGE M75 4423755			
RENDEZVOUS LOCOMOTIVE 80B			
F839			
KLSR QUEEN RED A2			
			Actual Data
			BW 91
			BWR 98
			205 760
			WWR 96

CE	BW	WW	YW	ADG	MCE	Milk	MWW	Stay	Marb	REA	API	TI
7.1	3.5	84	123	0.24	2.9	28.6	70.5	17.5	-0.07	0.93	116.3	75

Dark red, thick made, stout and deep bodied Engage son. His Dam has done a great job for us and has raised herd bulls that have sold to Vandehoven Ranch, Carlson Brothers, and Jason Zahn. Locomotive daughters are very productive cows.



M134

KLSR STRIDE M134

BD	%SM	Color	P/S
2024-03-27	PB SM	Non Dilutor	
WFL WESTCOTT 24C CROSSROAD STRIDE H149 CROSSROAD URSULA 791U			
KLSR STRIDE M134 4423760			
MRL RED WHISKEY 101B			
KLSR MISS FLUSH E749			
KLSR MISS RED POWER B1			
			Actual Data
			BW 91
			BWR 98
			205 722
			WWR 91

CE	BW	WW	YW	ADG	MCE	Milk	MWW	Stay	Marb	REA	API	TI
5.8	4.1	83.5	123	0.25	3.5	22.8	64.4	16.1	-0.12	0.97	107.7	71.8

Red baldy stride calf with big bodied broody Red Whiskey dam. E749 has a full sister to M134 working for Reimche Land and Cattle and another daughter working here who is the Dam to the M107 bull in the sale. Good productive cow family.



M143

M143

KLSR ENGAGE M143

BD	%SM	Color	P/S
2024-03-30	PB SM	Non dilutor	Homo Polled
MRL SYSCO 14D			
CROSSROAD ENGAGE 125K			
CROSSROAD GINGLES 180G			
KLSR ENGAGE M143 4425800			
KUNTZ SHERIFF 8A			
KLSR MISS SHERIFF			
D707			

Actual Data	
BW	86
BWR	96
205	805
WWR	101

CE	BW	WW	YW	ADG	MCE	Milk	MWW	Stay	Marb	REA	API	TI
10	1.6	83	123.8	0.25	4.3	29.2	70.6	14.6	-0.07	0.83	117.1	77

Another good red calf raised by a Sheriff cow. He is attractive made long and sound structured with a little more calving ease built in. A bull that could definitely be a candidate for heifers and his daughters will be the kind you want to keep.



M150

KLSR CONVOY M150

BD	%SM	Color	P/S
2024-04-01	PB SM	Hetero Black	Homo Polled
MRL SYSCO 14D			
CROSSROAD ENGAGE 125K			
CROSSROAD GINGLES 180G			
KLSR CONVOY M150 4423753			
LFE MCDAVID 413C			
SPRINGCREEK LENA 1E			
SPRINGCREEK LENA 900A			

Actual Data	
BW	94
BWR	102
205	825
WWR	104

CE	BW	WW	YW	ADG	MCE	Milk	MWW	Stay	Marb	REA	API	TI
6.1	4.5	89.5	133.2	0.27	2.3	28.7	73.4	14.4	-0.09	0.91	108.2	76.3

Another soggy made, Black hided engage son. We purchased his dam from The Springcreek Dispersion. She is a full sister to our 11F donor who has the M53 & M54 calves in the sale.



M150



M152

M152 KLSR ENGAGE M152

BD	%SM	Color	P/S
2024-04-03	3/4 SM 1/4 CS	Non dilutor	Homo Polled
MRL SYSCO 14D CROSSROAD ENGAGE 125K CROSSROAD GINGLES 180G			
KLSR ENGAGE M152 4425646 IPU ROYAL FLUSH 4C KLSR MS FLUSH E004 4			
			Actual Data
			BW 97
			BWR 103
			205 725
			WWR 88

CE	BW	WW	YW	ADG	MCE	Milk	MWW	Stay	Marb	REA	API	TI
6.1	5.2	84.5	126.7	0.26	2.3	26.1	68.3	11.1	-0.06	0.84	100.2	73.1

Real good Engage calf who's mom is one of the best looking red cows on the place. She has herd bulls working for Dalton Steichen and Jason Zahn and her only daughter was retained and looks great in our bred heifer pen.

M154 KLSR STRIDE M154

BD	%SM	Color	P/S
2024-04-03	PB SM	Non Dilutor	
WFL WESTCOTT 24C CROSSROAD STRIDE H149 CROSSROAD URSULA 791U			
KLSR STRIDE M154 4423763 WLB BLOOD RUNNER 3011C 461F KLSR MISS BLOODRUNNER J112 KLSR MS FLUSH E758			
			Actual Data
			BW 97
			BWR 109
			205 781
			WWR 98

CE	BW	WW	YW	ADG	MCE	Milk	MWW	Stay	Marb	REA	API	TI
3.4	6.2	86.7	128.7	0.26	0.4	24.6	67.9	16.3	-0.12	1.01	102.7	71

Fancy made, clean fronted red blaze faced stride son. From a very good cow family, E758 is his granddam and she has had every daughter retained and every bull sell through our sale.



M158

M158 KLSR ADMIRAL M158

BD	%SM	Color	P/S
2024-04-04	1/2 SM 1/2 AR	Non dilutor	Homo Polled
STRA GENERAL 882 STRA ADMIRAL 0150 STRA BANDITO 8132			
KLSR ADMIRAL M158 4425650 KS BAYLOR G119 BGL MISS BAYLOR K199B BGL FANCY F1671B			
			Actual Data
			BW 88
			BWR 99
			205 901
			WWR 109

CE	BW	WW	YW	ADG	MCE	Milk	MWW	Stay	Marb	REA	API	TI
11.2	1	102	156.2	0.34	7.8	28.2	79.1	16.9	0.27	0.66	138.2	92.4

The only red Simangus in the sale and he is a stout bugger. We bought his dam from Brian Leapaltd through Kenner's sale and she did a heck of a job on her first calf. Calving ease, growth and muscle and a young cow behind him with a great disposition and bright future ahead of her



M156 KLSR DIGNIFIED M156

BD	%SM	Color	P/S
2024-04-04	PB SM	Non dilutor	Homo Polled
IR IMPERIAL D948 TNT DIGNIFIED K630 TNT MISS H112			
KLSR DIGNIFIED M156 4427064 CROSSROAD STRIDE H149 KLSR MISS STRIDE K117 KLSR MISS FLUSH E818			
			Actual Data
			BW 74
			BWR 90
			205 803
			WWR 100

CE	BW	WW	YW	ADG	MCE	Milk	MWW	Stay	Marb	REA	API	TI
11.9	0	78.8	119.7	0.26	6	26.1	65.4	19.1	0.25	0.84	147.4	84.1

Red calving ease from Dignified and a beautiful Stride first calver. Stride daughters have been impressive, mild mannered, easy keepers with great udders and maternal instincts.



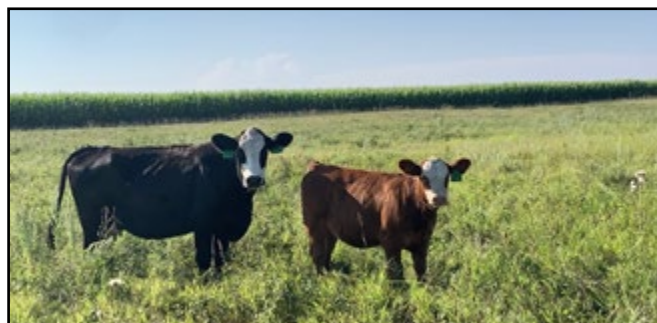
M160

M160 KLSR DIGNIFIED M160

BD	%SM	Color	P/S
2024-04-04	3/4 SM 5/32 AN 3/32 AR	Hetero Black	Homo Polled
IR IMPERIAL D948			
TNT DIGNIFIED K630			
TNT MISS H112			
KLSR DIGNIFIED M160 ⁴⁴²³⁷⁷⁵			
SPRINGCREEK TESLA 6E			
KLSR MISS TESLA K73			
D607			
			Actual Data
			BW 90
			BWR 103
			205 918
			WWR 116

CE	BW	WW	YW	ADG	MCE	Milk	MWW	Stay	Marb	REA	API	TI
11.1	1.9	88.8	136.3	0.3	7.6	27.1	71.4	18.1	0.37	0.74	139.4	86

Very stout made calf with lots of eye appeal to him. His dam is a beautiful Springcreek Tesla daughter and she did a heck of job on M160. His sire was purchased from TNT Simmentals very late in the breeding season as our cleanup bull got injured. He is now a proven low birth weight heifer bull that we now use in our commercial heifer. This a pretty unique calf and pedigree that offers calving ease along with awesome muscle shape and style as well a great up n coming young cow as his dam.



Dam and maternal sister to M165

M165 KLSR CONVOY M165

BD	%SM	Color	P/S
2024-04-07	PB SM	Hetero Black	Homo Polled
MADER WALK THIS WAY 224B			
SUNNY VALLEY CONVOY 24J			
SUNNY VALLEY DESIRE 1E			
KLSR CONVOY M165 ⁴⁴²³⁷⁵⁷			
W/C LOCK DOWN 206Z			
KLSR MS LOCKDOWN H5			
F883			
			Actual Data
			BW 89
			BWR 97
			205 785
			WWR 99

CE	BW	WW	YW	ADG	MCE	Milk	MWW	Stay	Marb	REA	API	TI
9.6	2.3	89.2	138.3	0.31	7.1	22.8	67.3	15.5	0.07	0.87	127.9	82.6

Stylish made convoy son out of a heavy milking fancy made black baldy cow. Her first calf sold to Matthew & Carrie Guthmiller, her second, a full sister to M165 is a beautiful red blaze faced bred heifer that anyone in my snapchat contacts probably saw quite a bit of. We are pretty excited to get her calved and into production. M165 has a lot of style and maternal traits bred in.



M165

M168 KLSR STRIDE M168

BD	%SM	Color	P/S
2024-04-08	1/2 SM 1/2 CS	Non dilutor	Homo Polled
WFL WESTCOTT 24C			
CROSSROAD STRIDE H149			
CROSSROAD URSULA 791U			
KLSR STRIDE M168 ⁴⁴²⁷⁰⁶⁷			
B630			
			Actual Data
			BW 92
			BWR 104
			205 888
			WWR 110

CE	BW	WW	YW	ADG	MCE	Milk	MWW	Stay	Marb	REA	API	TI
6.8	4.4	90.5	133.4	0.27	2.5	23.6	68.8	8.8	0	0.86	91.2	74.3

Stout made, attractive stride son. Dark cherry red that is desired by many. Dam is a moderate easy keeper with a nice udder. He will ad thickness and muscle and should keep them dark red as his dam is as dark is he is.



M168



M173 KLSR ENGAGE M173

BD	%SM	Color	P/S
2024-04-12	3/4 SM 1/4 CS	Non Dilutor	Hetero Polled
MRL SYSCO 14D CROSSROAD ENGAGE 125K CROSSROAD GINGLES 180G			
KLSR ENGAGE M173 4423768 RENDEZVOUS LOCOMOTIVE 80B KLSR MS LOCO D153 153			
			Actual Data
			BW 95
			BWR 103
			205 925
			WWR 117

CE	BW	WW	YW	ADG	MCE	Milk	MWW	Stay	Marb	REA	API	TI
5.7	5.2	94.6	137.5	0.27	1.9	33.9	81.1	13.8	-0.09	0.9	106.8	79

This is a calf that you wouldn't guess is as young as he is. He fits right in with bulls a month or two older than he is. His mom is no stranger to raising big heavy calves and she has put some good ones through the sale. This guy offers a ton of growth, length, great scrotal development and muscle in a dark red package.



M174 KLSR CONVOY M174

BD	%SM	Color	P/S
2024-04-13	3/4 SM 1/4 AN	Non Dilutor	Hetero Polled
MADER WALK THIS WAY 224B SUNNY VALLEY CONVOY 24J SUNNY VALLEY DESIRE 1E			
KLSR CONVOY M174 4423777 RENDEZVOUS LOCOMOTIVE 80B KLSR MS LOCO D910 910			
			Actual Data
			BW 92
			BWR 98
			205 912
			WWR 115

CE	BW	WW	YW	ADG	MCE	Milk	MWW	Stay	Marb	REA	API	TI
7.8	3.5	90.5	139.3	0.3	5.8	27.9	73.1	13.7	0.09	0.89	109.2	78.1

The locomotive daughters can just flat out raise calves, they are getting up there in age but they just keep cranking them out. M174 and M173 are great examples of what they can do. Thick, long, and full of muscle. He'll be a big-time herd bull when he is mature.



M177 KLSR CONVOY M177

BD	%SM	Color	P/S
2024-04-14	3/4 SM 1/4 AN	Hetero Black	Homo Polled
MADER WALK THIS WAY 224B SUNNY VALLEY CONVOY 24J SUNNY VALLEY DESIRE 1E			
KLSR CONVOY M177 4423776 KLSR SPEED DEMON E708 KLSR MS DEMON J84 KLSR MS SHERIFF G930			
			Actual Data
			BW 89
			BWR 98
			205 813
			WWR 102

CE	BW	WW	YW	ADG	MCE	Milk	MWW	Stay	Marb	REA	API	TI
10.1	2.8	91.8	147	0.34	6.4	25.2	71.4	15.4	0.08	0.89	118.1	80.1

Stylish, deep bodied Convoy calf out a good young Speed Demon daughter, Speed Demon is a slam dunk for making females with perfect udders. Convoy was our largest sire group last year and he's right up there again. He just consistently sires good cattle, both bulls and heifers.



M178 KLSR CONVOY M178

BD	%SM	Color	P/S	
2024-04-14	1/2 SM 1/2 CS	Hetero Black	Homo Polled	
MADER WALK THIS WAY 224B SUNNY VALLEY CONVOY 24J SUNNY VALLEY DESIRE 1E KLSR CONVOY M178 4425652 B682P			Actual Data	
			BW	93
			BWR	100
			205	947
			WWR	115

CE	BW	WW	YW	ADG	MCE	Milk	MWW	Stay	Marb	REA	API	TI
9.1	3.7	98.4	148.2	0.31	6.4	23.6	72.7	9.4	0.06	0.87	103.7	82

Convoy calf that offers a lot of growth, length and performance. His dam is a no miss cow that is great at feeding a calf. M178 should be a bull that will enhance growth and add pounds to steers and also make very desirable replacement heifers.



M190 KLSR ENGAGE J100

BD	%SM	Color	P/S	
2024-04-17	PB SM	Non dilutor	Homo Polled	
MRL SYSCO 14D			Actual Data	
CROSSROAD ENGAGE 125K				
CROSSROAD GINGLES 180G				
KLSR ENGAGE J100 4427063				
WLB BLOOD RUNNER 3011C 461F				
KLSR MS BLOODRUNNER			BW	89
KLSR MISS SHIFT T150			BWR	103
			205	803
			WWR	100

CE	BW	WW	YW	ADG	MCE	Milk	MWW	Stay	Marb	REA	API	TI
6	4.4	84.1	121.5	0.23	2.6	27.7	69.7	15.1	-0.08	0.85	107.1	73.1

Engage calf that is very attractive made, long, and has that proud herd bull look to him. He is backed by a heavy milking productive cow family. Younger calf that will grow and become a nice mature breeding bull.



M193 KLSR CONVOY M193

BD	%SM	Color	P/S	
2024-04-18	PB SM	Hetero Black	Homo Polled	
MADER WALK THIS WAY 224B SUNNY VALLEY CONVOY 24J SUNNY VALLEY DESIRE 1E KLSR CONVOY M193 4423769 KLSR SHIMMER Z33 E798 C571			Actual Data	
			BW	90
			BWR	96
			205	827
			WWR	104

CE	BW	WW	YW	ADG	MCE	Milk	MWW	Stay	Marb	REA	API	TI
9.4	3.1	87.5	136.9	0.31	6.5	24.4	68	17.4	-0.08	1.09	122.5	78

Another good young convoy calf. His dam has raised daughters that sold through our sale to Ross Severson and Ray Kramlich and her Tesla Bull calf was a sale highlight last year going to Roger Matson.



M198

KLSR STRIDE M198

The youngest bull calf in the sale and he will still attract some attention with his dark red color and fancy blaze face. Don't let his age stop you. He will grow up into a very useful breeding bull. Lots of style and eye appeal in this guy. Imagine a group of dark red blaze faced heifer calves sired by him. Same cow family as the M77 bull calf in the sale.

BD	%SM	Color	P/S									
2024-04-22	PB SM	Non dilutor	Homo Polled									
<div>WFL WESTCOTT 24C</div> <div>CROSSROAD STRIDE H149</div> <div>CROSSROAD URSULA 791U</div> <div>KLSR STRIDE M198 4423756</div> <div>WLB BLOOD RUNNER 3011C 461F</div> <div>KLSR MS BLOODRUNNER H63</div> <div>KLSR MISS FLUSH E818</div>			Actual Data									
			BW	86								
			BWR	95								
			205	800								
			WWR	101								
CE	BW	WW	YW	ADG	MCE	Milk	MWW	Stay	Marb	REA	API	TI
5.7	4.1	85	126.3	0.26	1.6	24.3	66.7	16.3	-0.08	1.07	111.3	74.1



Open Heifers



M5

M2

KLSR MISS M2

BD	%SM	Color	P/S
2024-02-18	PB SM	Hetero Black	Homo Polled
MADER WALK THIS WAY 224B			
SUNNY VALLEY CONVOY 24J			
SUNNY VALLEY DESIRE 1E			
KLSR MISS M2 4457099			
KLSR RED NATION C545			
KLSR MISS NATION E763			
DSR HOLLEY T389			

Actual Data	
BW	103
BWR	118
205	554
WWR	86

CE	BW	WW	YW	ADG	MCE	Milk	MWW	Stay	Marb	REA	API	TI
4	6.4	97	144.8	0.3	3	22.8	71.2	16.2	-0.01	0.88	112.8	79.4

Stout, long made Convoy daughter out of an easy keeping cow that holds her condition very well.

M5

KLSR MISS COOL DIRECTIVE M5

BD	%SM	Color	P/S
2024-02-23	PB SM	Hetero Black	Polled
WS PROCLAMATION E202			
MYV/SAS COOL DIRECTIVE J909			
RUST MS CERTIN FLIRT 909G			
KLSR MISS COOL DIRECTIVE M5 4468978			
WLB BLOOD RUNNER 3011C 461F			
KLSR MISS BLOODRUNNER K33			
KLSR MS RUSHMORE F907			

Actual Data	
BW	71
BWR	93
205	676
WWR	108

CE	BW	WW	YW	ADG	MCE	Milk	MWW	Stay	Marb	REA	API	TI
11.5	1.7	91.7	131.2	0.25	5.3	24.9	69.6	16.1	0.25	0.85	141.1	88.5

Very Stout made, attractive heifer with a lot of volume and depth. Cool Directive worked very well for us on our first calf heifers and she will be the only one selling as we retained the rest. Definitely has the look and disposition to be considered for the show ring. Same cow family as the M173 bull calf in the sale.



M9

KLSR MISS ENGAGE M9

BD	%SM	Color	P/S
2024-02-25	PB SM	Non dilutor	Homo Polled
MRL SYSCO 14D CROSSROAD ENGAGE 125K CROSSROAD GINGLES 180G			
KLSR MISS ENGAGE M9 4457104			
IPU ROYAL FLUSH 4C			
F842			
KLSR FANTASY GIRL 901W			
			Actual Data
			BW 66
			BWR twin
			205 540
			WWR twin

CE	BW	WW	YW	ADG	MCE	Milk	MWW	Stay	Marb	REA	API	TI
7.4	4.2	88.3	132.1	0.27	2.9	24.2	68.2	15.5	-0.09	0.97	112	75.3

This is a twin. We retained her sister and are offering this one for sale. Very good cow family. She should make a very nice cow.

M30

KLSR MISS GENESIS M30

BD	%SM	Color	P/S
2024-03-03	PB SM	Black	Polled
WS PROCLAMATION E202			
LBR GENESIS G69			
LBR DIANA D69			
KLSR MISS GENESIS M30			
WLB MANITOBA 52Z 435B			
KLSR D695			
KSR DELIGHT 222Y			
			Actual Data
			BW 95
			BWR 107
			205 611
			WWR 98

CE	BW	WW	YW	ADG	MCE	Milk	MWW	Stay	Marb	REA	API	TI
7	4.1	99.1	146.2	0.3	2.3	16.4	65.8	14.3	0.4	0.94	139.1	92.3

She should make a great cow. Her dam has been around a long time and has been a consistent producer.





M32

KLSR MISS ENGAGE M32

BD	%SM	Color	P/S
2024-03-03	PB SM	Red	Homo Polled

MRL SYSCO 14D
CROSSROAD ENGAGE 125K
CROSSROAD GINGLES 180G
KLSR MISS ENGAGE M32 (4457116)
SPRINGCREEK BLUE CHIP 9D
SPRINGCREEK HONEY 3F
SPRINGCREEK HONEY 59C

Actual Data	
BW	93
BWR	ET
205	602
WWR	ET

CE	BW	WW	YW	ADG	MCE	Milk	MWW	Stay	Marb	REA	API	TI
7.8	4	89.2	129.8	0.25	4	33.8	78.3	14.8	-0.1	0.85	110.2	76.4

M32, M42, & M49 all E.T. full sisters. We purchased Their mom from Springcreek Simmentals. We Retained her calf that she was carrying when she came here and it is an absolute tank of a heifer. These 3 should make very good heavy milking cows.

Full Sisters



M42

KLSR MISS ENGAGE 3F M42

BD	%SM	Color	P/S
2024-03-05	PB SM	Red	Homo Polled

MRL SYSCO 14D
CROSSROAD ENGAGE 125K
CROSSROAD GINGLES 180G
KLSR MISS ENGAGE 3F M42 (4425645)
SPRINGCREEK BLUE CHIP 9D
SPRINGCREEK HONEY 3F
SPRINGCREEK HONEY 59C

Actual Data	
BW	93
BWR	ET
205	663
WWR	ET

CE	BW	WW	YW	ADG	MCE	Milk	MWW	Stay	Marb	REA	API	TI
7.8	4	89.2	129.8	0.25	4	33.8	78.3	14.8	-0.1	0.85	110.2	76.4



M49

KLSR MISS ENGAGE 3F M42

BD	%SM	Color	P/S
2024-03-06	PB SM	Red	Homo Polled

CE	BW	WW	YW	ADG	MCE	Milk	MWW	Stay	Marb	REA	API	TI
7.8	4	89.2	129.8	0.25	4	33.8	78.3	14.8	-0.1	0.85	110.2	76.4

Sale feature!!! M42 and M49 are Flush sisters and have been standouts from a very young age. They both have the look of becoming front pasture brood cows. Depth, volume and length. Both heifers that were hard decisions to let go. They should make great cows for their new owners.

Actual Data	
BW	95
BWR	ET
205	676
WWR	ET

M55 KLSR MISS GENESIS 937E M55

BD	%SM	Color	P/S
2024-03-07	PB SM	Homo Black	Homo Polled

WS PROCLAMATION E202	Actual Data	
LBRS GENESIS G69	BW	91
LBR DIANA D69	BWR	ET
KLSR MISS GENESIS 937E M55 (4425658)	205	632
SPRINGCREEK LINER 56U	WWR	ET
SPRINGCREEK AMANDA 937E		
SPRINGCREEK AMANDA 2A		

CE	BW	WW	YW	ADG	MCE	Milk	MWW	Stay	Marb	REA	API	TI
7.6	4.2	103.6	154.1	0.32	4.2	25.4	77.2	17.1	0.4	0.95	147.2	96

ET daughter of our 937E donor. Full sibling to the M1 and M80 bulls in the sale.

M81 KLSR MISS ENGAGE M81

BD	%SM	Color	P/S
2024-03-13	PB SM	Non Dilutor	Hetero Polled

MRL SYSCO 14D		Actual Data	
CROSSROAD ENGAGE 125K			
CROSSROAD GINGLES 180G		BW	87
KLSR MISS ENGAGE M81	4457096	BWR	99
RENDEZVOUS LOCOMOTIVE 80B		205	572
D603		WWR	89
DSR MIDNIGHT TRACK T500			

CE	BW	WW	YW	ADG	MCE	Milk	MWW	Stay	Marb	REA	API	TI
5.5	4.7	86.8	127.9	0.26	1.9	29.4	72.7	17.2	-0.06	0.95	113.3	75.4

Another good red blaze Engage Daughter. She comes from a great cow family going back to the T500 cow we bought from Deckerts. She had Several High selling bull calves for us. M81's dam has been a good cow for us and has put 3 bulls and another daughter through our sale.



M101 KLSR MISS CONVOY M101

BD	%SM	Color	P/S
2024-03-18	3/4 SM 1/4 AN	Non dilutor	Homo Polled

MADER WALK THIS WAY 224B	Actual	
SUNNY VALLEY CONVOY 24J	Data	
SUNNY VALLEY DESIRE 1E	BW	82
KLSR MISS CONVOY M101 ⁴⁴⁵⁷¹¹²	BWR	96
CCR BOULDER 1339A	205	619
KLSR MS BOULDER J32	WWR	97
KLSR MS PWR PLAY G1031		

CE	BW	WW	YW	ADG	MCE	Milk	MWW	Stay	Marb	REA	API	TI
9.6	2.5	86.4	134.3	0.3	7.1	23.7	66.8	15	0.12	0.87	116.7	78

Red convoy daughter with a unique pedigree. We retained her maternal sister last year.

M63 KLSR MISS STRIDE M63

BD	%SM	Color	P/S
2024-03-08	PB SM	Non Dilutor	Polled

WFL WESTCOTT 24C	Actual Data	
CROSSROAD STRIDE H149	BW	90
CROSSROAD URSULA 791U	BWR	103
KLSR MISS STRIDE M63 4457100	205	566
IPU ROYAL FLUSH 4C	WWR	88
KLSR MISS FLUSH E805		
KLSR MS 205Z		

CE	BW	WW	YW	ADG	MCE	Milk	MWW	Stay	Marb	REA	API	TI
5.2	5.3	86.4	129.3	0.27	2.3	22.7	65.8	15.5	-0.09	1.01	106.3	72.6

Fancy made red baldy heifer. Her Dam has the same baldy face and a nice clean udder



M100 KLSR MISS CONVOY M100

BD	%SM	Color	P/S
2024-03-18	PB SM	Hetero Black	Homo Polled

MADER WALK THIS WAY 224B	Actual	
SUNNY VALLEY CONVOY 24J	Data	
SUNNY VALLEY DESIRE 1E	BW	74
KLSR MISS CONVOY M100 4457113	BWR	88
TJ GOLD 274G	205	657
KLSR MS GOLD J3	WWR	102
KLSR MS NATION G904		

CE	BW	WW	YW	ADG	MCE	Milk	MWW	Stay	Marb	REA	API	TI
11.6	0.7	86.4	131	0.28	7.9	24.5	67.6	16	0.13	0.88	136.4	84.9

Real good Convoy daughter that should probably be staying here. Her dam is moderate framed young cow that has a bright future. We retained her first calf and she is bred up early in the bred heifer pen. We expect the convoy daughters to make great cows as they all look great. I would expect this girl to follow suite.



M103

M103 KLSR MISS ENGAGE M103

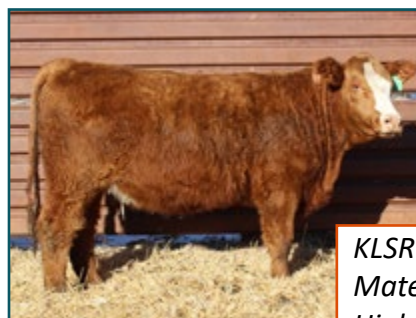
BD	%SM	Color	P/S
2024-03-19	PB SM	Red	Homo Polled

MRL SYSCO 14D
 CROSSROAD ENGAGE 125K
 CROSSROAD GINGLES 180G
KLSR MISS ENGAGE M103 4457110
 SPRINGCREEK BLUE CHIP 9D
 SPRINGCREEK BROOKE 59G
 SPRINGCREEK BROOKE 68Z

Actual Data	
BW	94
BWR	107
205	658
WWR	103

CE	BW	WW	YW	ADG	MCE	Milk	MWW	Stay	Marb	REA	API	TI
6.3	4.8	86.5	128.4	0.26	3.3	34.8	78	17	-0.13	0.9	110.1	74

This is a maternal sister to the High selling open heifer in last years sale. She should make a great cow.



KLSR Walk The Line L7
 Maternal Sister of M103
 High Selling Open Heifer in
 the 2024 Sale



M117

M117 KLSR MISS CONVOY M117

BD	%SM	Color	P/S
2024-03-24	PB SM	Hetero Black	Polled

MADER WALK THIS WAY 224B
 SUNNY VALLEY CONVOY 24J
 SUNNY VALLEY DESIRE 1E
KLSR MISS CONVOY M117 4469071
 LFE THE RIDDLER 323B
 F836
 KLSR MISS T292 Y15

Actual Data	
BW	91
BWR	102
205	649
WWR	98

CE	BW	WW	YW	ADG	MCE	Milk	MWW	Stay	Marb	REA	API	TI
6.6	4.8	94.1	146.3	0.33	5.7	25.2	72.6	14.5	-0.02	0.99	115.3	80.1

Stout Long made heifer with a little chrome. From a productive cow family that is heavy milking with strong maternal instincts.

M118 KLSR MISS ENGAGE M118

BD	%SM	Color	P/S
2024-03-24	PB SM	Non Dilutor	Polled
MRL SYSCO 14D CROSSROAD ENGAGE 125K CROSSROAD GINGLES 180G			Actual Data
KLSR MISS ENGAGE M118 ⁴⁴⁵⁷¹¹¹ WLB BLOOD RUNNER 3011C 461F			BW 84
KLSR MS BLOODRUNNER H75 KLSR MISS NATION E763			BWR 98
			205 651
			WWR 102

CE	BW	WW	YW	ADG	MCE	Milk	MWW	Stay	Marb	REA	API	TI
5.7	4.4	88.5	127.3	0.24	1.5	26.4	70.6	16.1	-0.06	0.9	111.5	75.9

Dark cherry red heifer out of a good Bloodrunner daughter. I would expect udder quality to be strong as all the Bloodrunner females have very nice udders. Same cow family as the M2 Heifer.

M132 KLSR MISS STRIDE M132

BD	%SM	Color	P/S
2024-03-27	PB SM	Non dilutor	Homo Polled
WFL WESTCOTT 24C CROSSROAD STRIDE H149 CROSSROAD URSULA 791U			Actual Data
KLSR MISS STRIDE M132 ⁴⁴⁵⁷¹⁰⁸ MRL RED WHISKEY 101B			BW 89
F873 KLSR RED FOX X71			BWR 102
			205 638
			WWR 99

CE	BW	WW	YW	ADG	MCE	Milk	MWW	Stay	Marb	REA	API	TI
5.7	4.8	87.9	128.4	0.25	2.8	20.1	63.9	15.1	-0.05	0.99	109.6	74.9

Another heifer that was debated back and forth on while sorting heifers for the sale. Her dam has a strong production record. A full Sister sold in the sale last year to Cameron Schultz and a 3rd full sister is working in or herd and produced a very nice Cool Directive heifer that we retained in the replacement pen. Her first calf was KLSR Mr Redwood H21 that sold as a calving ease herd bull prospect to Reimche Land and Cattle.

M126 KLSR MISS STRIDE M126

BD	%SM	Color	P/S
2024-03-26	PB SM	Non Dilutor	Polled
WFL WESTCOTT 24C CROSSROAD STRIDE H149 CROSSROAD URSULA 791U			Actual Data
KLSR MISS STRIDE M126 ⁴⁴⁵⁷¹¹⁷ KBHR POWERSHIFT T150			BW 94
KLSR MISS SHIFT T150 KLSR MISS 806U			BWR 107
			205 628
			WWR 92

CE	BW	WW	YW	ADG	MCE	Milk	MWW	Stay	Marb	REA	API	TI
3.6	6.1	82.6	119.9	0.23	1.9	25.5	66.7	13.8	-0.11	0.83	96.4	68.7

Red blaze faced stride daughter that will turn into a long bodied productive cow. Same cow family as the M117 Heifer.





M142

M142 KLSR MISS STRIDE M142

BD	%SM	Color	P/S									
2024-03-29	PB SM	Non dilutor	Homo Polled									
<div>WFL WESTCOTT 24C</div> <div>CROSSROAD STRIDE H149</div> <div>CROSSROAD URSULA 791U</div> <div>KLSR MISS STRIDE M142 4469072</div> <div>IR IMPERIAL D948</div> <div>KLSR MISS IMPERIAL H6</div> <div>KLSR MISS SHERIFF</div>			Actual Data									
			BW	86								
			BWR	98								
			205	670								
			WWR	102								
CE	BW	WW	YW	ADG	MCE	Milk	MWW	Stay	Marb	REA	API	TI
8.3	2.6	81.3	124.2	0.27	3.2	23.5	63.7	16.1	0.13	1.03	126.8	78.5

Another sale feature heifer here. Her dam is a moderate easy keeper with very nice udder typical of the Imperial daughters. Grandam has the M143 bull calf in the sale as well. Very productive cow family with calving ease, udder quality, and maternal strength bred in.

M144 KLSR MISS ENGAGE M144

BD	%SM	Color	P/S									
2024-03-30	PB SM	Hetero Black	Homo Polled									
<div>MRL SYSCO 14D</div> <div>CROSSROAD ENGAGE 125K</div> <div>CROSSROAD GINGLES 180G</div> <div>KLSR MISS ENGAGE M144 4457118</div> <div>TNT TANKER U263</div> <div>KLSR MISS TANKER B21</div> <div>KLSR MISS T292 Y15</div>			Actual Data									
			BW	94								
			BWR	107								
			205	653								
			WWR	96								
CE	BW	WW	YW	ADG	MCE	Milk	MWW	Stay	Marb	REA	API	TI
4.9	5.2	91.3	135.3	0.27	2.4	28.8	74.3	15.3	-0.13	1	105.6	75.4

This heifer is backed by a big-time herd bull producing cow in B21. She has put six bulls through our sale including KLSR Attraction L172 for \$8500 in last years sale to Steve Scholz and KLSR and KLSR Wide Margin K64 for \$10,000 the year prior to Hanna Bowen. Sale feature for sure

M147 KLSR MISS CONVOY M147

BD		%SM	Color	P/S	
2024-03-31		PB SM	Hetero Black	Homo Polled	
<div>MADER WALK THIS WAY 224B</div> <div>SUNNY VALLEY CONVOY 24J</div> <div>SUNNY VALLEY DESIRE 1E</div> <div>KLSR MISS CONVOY M147 4468977</div> <div>KLSR SHOWCASE D620</div> <div>F853</div> <div>KSR DELIGHT 222Y</div>				Actual Data	
				BW	87
				BWR	105
				205	531
				WWR	85

CE	BW	WW	YW	ADG	MCE	Milk	MWW	Stay	Marb	REA	API	TI
7.1	3.9	85.8	135.8	0.31	4.9	24.6	70.4	16.5	-0.06	0.96	116	75

Another good convoy daughter that should make a nice cow. Her dam is the granddam to the M101 heifer in the sale.

M149 KLSR MISS DIGNIFIED M149

BD	%SM	Color	P/S
2024-04-01	5/8 SM 1/4 AN 1/8 AR	Hetero Black	Homo Polled

IR IMPERIAL D948	Actual Data
TNT DIGNIFIED K630	BW 70
TNT MISS H112	BWR 90
KLSR MISS DIGNIFIED M149 ⁴⁴⁶⁸⁹⁷⁵	205 575
SPRINGCREEK TESLA 6E	WWR 92
KLSR MISS TESLA K24	
KLSR BLACK IMAGE B6	

CE	BW	WW	YW	ADG	MCE	Milk	MWW	Stay	Marb	REA	API	TI
12.7	-0.1	76.4	118.5	0.26	7.7	28	67.3	18.5	0.35	0.64	148	83

Smaller framed heifer out of a heavy muscled Tesla daughter. The Tesla females did a great job with their first calves. They all exhibit the same udder quality, hung high and tight with small teat size.

M169 KLSR MISS CONVOY M169

BD	%SM	Color	P/S
2024-04-09	PB SM	Non Dilutor	Homo Polled

MRL SYSCO 14D	Actual Data
CROSSROAD ENGAGE 125K	BW 78
CROSSROAD GINGLES 180G	BWR 94
KLSR MISS CONVOY M169 ⁴⁴⁶⁸⁹⁷⁶	205 627
KUNTZ SHERIFF 8A	WWR 100
KLSR MS SHERIFF G978	
KLSR MISS FLUSH E797	

CE	BW	WW	YW	ADG	MCE	Milk	MWW	Stay	Marb	REA	API	TI
10.9	1.5	81.9	122.2	0.25	4.5	29.2	70.4	15	-0.15	0.94	114.7	74.3

As I look up the cow summary on this girl's dam it has me wondering why we are selling her. Her maternal brother is KLSR Stride L76 - a high selling red blaze bull in last year's sale to Cody Gentzkow. Her grandam is E797 who is one of the top producing red cows we have and raised KLSR Thunder J44 who also sold to Cody Gentzkow a few years back. This pedigree is full of maternal strength backed by cows that are easy keeping, fertile-no miss cows that get it done every year. Easy to predict she should be a producer.

M167 KLSR MISS DIGNIFIED M167

BD	%SM	Color	P/S
2024-04-08	3/4 SM 5/32 AN 3/32 AR	Hetero Black	Polled

IR IMPERIAL D948	Actual Data
TNT DIGNIFIED K630	BW 74
TNT MISS H112	BWR 90
KLSR MISS DIGNIFIED M167 ⁴⁴⁵⁷¹²⁰	205 621
DCR MR MAIN ATTRACTION E18	WWR 91
KLSR MISS ATTRACTION K95	
KLSR MS LOCO D168	

CE	BW	WW	YW	ADG	MCE	Milk	MWW	Stay	Marb	REA	API	TI
11.5	0.1	73.1	111	0.24	6.4	26.1	62.5	17.8	0.36	0.72	135.8	78.6

A lot of calving ease and maternal strength in this pedigree. Goes back to a Locomotive cow on the bottom side of the pedigree.

M176 KLSR MISS CONVOY M176

BD	%SM	Color	P/S
2024-04-14	PB SM	Non Dilutor	Polled

MADER WALK THIS WAY 224B	Actual Data
SUNNY VALLEY CONVOY 24J	BW 88
SUNNY VALLEY DESIRE 1E	BWR 99
KLSR MISS CONVOY M176 ⁴⁴⁵⁷¹⁰¹	205 627
KUNTZ SHERIFF 8A	WWR 98
KLSR MISS SHERIFF E716	
KLSR MISS HARVESTER C528	

CE	BW	WW	YW	ADG	MCE	Milk	MWW	Stay	Marb	REA	API	TI
9.1	3.4	93.2	146.7	0.33	7.1	27.3	73.9	15.4	-0.03	0.93	121.8	81.9

A red Convoy daughter that comes from a very productive cow in E716. A black full brother sold to Hanna Bowen in last years sale and her calf the year prior was a high selling Tesla son to Cody Gentzkow. She also has two very nice daughters working in our herd.

COMMERCIAL OPEN HEIFERS

Last Fall we had the opportunity to purchase a set of commercial cows from Bryce Monson to help grow our recip cow herd. They were bred to Hereford bulls from Winter Hereford Ranch of Goodrich, ND These Baldy calves are the result. 10 black and 2 red. No heifers were retained so you are getting the top cut from the group. Disposition is excellent on these calves as well as their mothers. The cows were all good milkers and did a very nice job. A lot of them are now carrying embryo calves and we are excited for those results. Great opportunity here.... Resale as bred heifers should be easy if you go that route or keep them to make a great set of cows.



Bred Heifers

Bred Heifers
Sell First

RED COMMERCIAL BRED HEIFERS, PURCHASED FROM THE **Schmitt Ranch, Randy & Stacey Schmitt family of Rugby ND.**

8 head, AI bred to the breed sensation Rockin H Captivate J75. These heifers were purchased from Randy and Stacy Schmitt of Rugby ND. We have bought and developed heifers from the Schmitt's for a few years in a row now and have had nothing but positive feed-back from past buyers of the bred heifers. There is a lot of years and generations of performance red Simmental genetics behind these girls. They are due March 10th



BLACK COMMERCIAL BRED HEIFERS, PURCHASED FROM THE **Steichen Ranch, Dalton & Kristen Steichen of Goodrich ND**

10 head, bull bred, due to calve April 1st for 30 days, Individual Ultrasound dates are on the ear tags. These heifers were purchased from Dalton and Kristen Steichen of Goodrich ND. Dalton has bought top end bulls from our sale over the years and manages his cow herd very well. These Heifers have been raised right and should make great set of young cows.

- Bred to - LCDR End Game 236L (Asa# 4264310) CE 17.8 BW .3
- KLSR Mr Attraction J148 (Asa# 3953677) CE 9.7 BW 2 (proven on heifers for 2 seasons)





291 24th Ave NE
Hurdsville, ND 58451

www.KLSRCOWS.com

